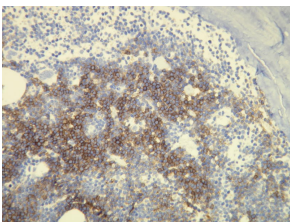


## Anti-CD20 Antibody [E17-P] (A8194)

### Specifications:

Name:	Anti-CD20 Antibody [E17-P]
Description:	Rabbit monoclonal (E17-P) antibody to CD20.
Specificity:	This antibody recognizes the epitope between Pro283 - Ser295.
Applications:	IHC-P, IHC-Fr
Recommended Dilutions:	IHC: 1:100-1:200.
Reactivity:	Human
Immunogen:	Peptide derived from C-terminal sequence of human CD20.
Host:	Rabbit
Clonality:	Monoclonal
Clone ID:	E17-P
Isotype:	IgG
Conjugate:	Unconjugated
Product Form:	Liquid
Formulation:	Supplied in Tris Buffered Saline, pH 8.0, with 20 mg/ml BSA and 0.05% Sodium Azide.
Storage:	Store at 4°C.
Disclaimer:	This product is for research use only. It is not intended for diagnostic or therapeutic use.

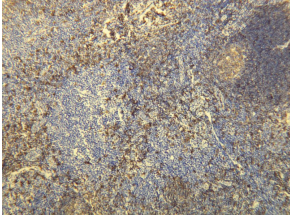
### Images:



Chronic lymphocytic leukaemia cells in the bone marrow biopsy, showing CD20 expression. Formalin fixed, paraffin embedded human tissues (4µm sections) stained with Anti-CD20 Antibody (A8194).

## Anti-CD20 Antibody [E17-P] (A8194)

Images continued:



CD20 expression in b-lymphocytes of the palatine tonsil. Formalin fixed, paraffin embedded human tissues (4 $\mu$ m sections) stained with Anti-CD20 Antibody (A8194).