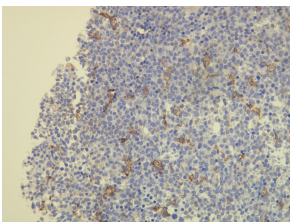


Anti-CD163 Antibody [K20-T] (A8196)

Specifications:

Name:	Anti-CD163 Antibody [K20-T]
Description:	Rabbit monoclonal (K20-T) antibody to CD163.
Specificity:	This antibody recognizes the epitope between Gly134 - Gly148.
Applications:	IHC-P, IHC-Fr
Recommended Dilutions:	IHC: 1:100-1:200.
Reactivity:	Human
Immunogen:	Peptide derived from N-terminal sequence of human CD163.
Host:	Rabbit
Clonality:	Monoclonal
Clone ID:	K20-T
Isotype:	IgG
Conjugate:	Unconjugated
Product Form:	Liquid
Formulation:	Supplied in Tris Buffered Saline, pH 8.0, with 20 mg/ml BSA and 0.05% Sodium Azide.
Storage:	Store at 4°C.
Disclaimer:	This product is for research use only. It is not intended for diagnostic or therapeutic use.

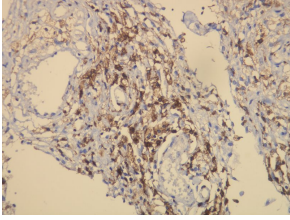
Images:



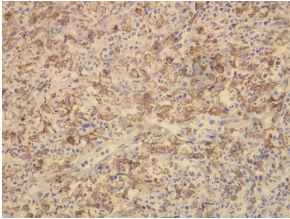
CD163 expression in the macrophages of the bone marrow. Formalin fixed, paraffin embedded human tissues (4 μ m sections) stained with Anti-CD163 Antibody (A8196).

Anti-CD163 Antibody [K20-T] (A8196)

Images continued:



Organizing stage of leukomalacia CD163-positive macrophages. Formalin fixed, paraffin embedded human tissues (4 μ m sections) stained with Anti-CD163 Antibody (A8196).



CD163-positive macrophages in the abscess of the liver. Formalin fixed, paraffin embedded human tissues (4 μ m sections) stained with Anti-CD163 Antibody (A8196).