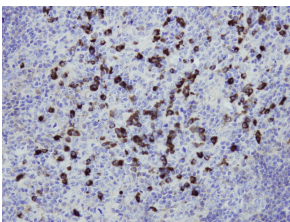


Anti-IgG Antibody [I17-T] (A8243)

Specifications:

Name:	Anti-IgG Antibody [I17-T]
Description:	Rabbit monoclonal (I17-T) antibody to IgG.
Specificity:	This antibody recognizes the epitope between Ala261 - Lys275.
Applications:	IHC-P, IHC-Fr
Recommended Dilutions:	IHC: 1:100-1:300.
Reactivity:	Human
Immunogen:	Peptide derived from the domain close to the C-terminus of human IgG-1 chain C region.
Host:	Rabbit
Clonality:	Monoclonal
Clone ID:	I17-T
Isotype:	IgG
Conjugate:	Unconjugated
Product Form:	Liquid
Formulation:	Supplied in Tris Buffered Saline, pH 8.0, with 20 mg/ml BSA and 0.05% Sodium Azide.
Storage:	Store at 4°C.
Disclaimer:	This product is for research use only. It is not intended for diagnostic or therapeutic use.

Images:



IgG positive plasma cells in the case of IgG4-related chronic sclerosing sialoadenitis, detected with Anti-IgG Antibody (A8243). Formalin fixed, paraffin embedded human tissue (4µm section) stained.