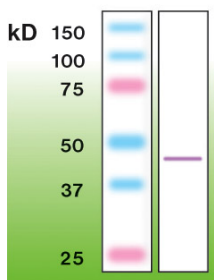


Anti-beta Actin Antibody [S12-I] (A8250)

Specifications:

Name:	Anti-beta Actin Antibody [S12-I]
Description:	Rabbit monoclonal (S12-I) antibody to beta Actin.
Specificity:	This antibody recognizes the epitope located between Ser358 - Ser368.
Applications:	WB, ELISA, IP, ICC
Recommended Dilutions:	WB: 1:2,000, ELISA: 1:10,000-1:20,000.
Reactivity:	Human, Mouse, Rat
Immunogen:	Peptide derived from C-terminal sequence of human beta actin.
Host:	Rabbit
Clonality:	Monoclonal
Clone ID:	S12-I
Isotype:	IgG
Conjugate:	Unconjugated
Product Form:	Liquid
Formulation:	Supplied in Tris Buffered Saline, pH 8.0, with 10 mg/ml BSA and 0.05% Sodium Azide.
Storage:	Shipped at 4°C. Upon delivery aliquot and store at -20°C. Avoid freeze / thaw cycles.
Disclaimer:	This product is for research use only. It is not intended for diagnostic or therapeutic use.

Images:



Western blot of Actin in mouse brain crude lysate (50 μ g of protein loaded).