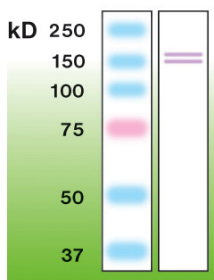


## Anti-iNOS Antibody [K13-A] (A8252)

### Specifications:

Name:	Anti-iNOS Antibody [K13-A]
Description:	Rabbit monoclonal (K13-A) antibody to iNOS.
Specificity:	This antibody recognizes the epitope located between Ser1119 - Gly1129.
Applications:	WB, ELISA, IP, ICC
Recommended Dilutions:	WB: 1:2,000, ELISA: 1:20,000-1:50,000.
Reactivity:	Human, Mouse, Rat
Immunogen:	Peptide derived from C-terminal sequence of human iNOS.
Host:	Rabbit
Clonality:	Monoclonal
Clone ID:	K13-A
Isotype:	IgG
Conjugate:	Unconjugated
Product Form:	Liquid
Formulation:	Supplied in Tris Buffered Saline, pH 8.0, with 10 mg/ml BSA and 0.05% Sodium Azide.
Storage:	Shipped at 4°C. Upon delivery aliquot and store at -20°C. Avoid freeze / thaw cycles.
Disclaimer:	This product is for research use only. It is not intended for diagnostic or therapeutic use.

### Images:



Western blot of iNOS in mouse brain crude lysate (50 $\mu$ g of protein loaded).