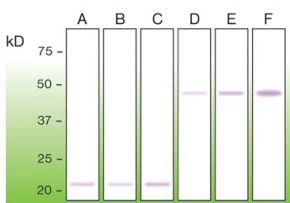


## Anti-BAX Antibody [G26-R] (A8275)

### Specifications:

Name:	Anti-BAX Antibody [G26-R]
Description:	Rabbit monoclonal (G26-R) antibody to BAX.
Specificity:	This antibody recognizes the epitope located between Pro13 - Gly36.
Applications:	WB, ELISA, IP, ICC
Recommended Dilutions:	WB: 1:2,000, ELISA: 1:30,000-1:50,000, ICC: 1:200-1:600.
Reactivity:	Human, Mouse, Rat
Immunogen:	Peptide derived from the N-terminal sequence of human Bax.
Host:	Rabbit
Clonality:	Monoclonal
Clone ID:	G26-R
Isotype:	IgG
Conjugate:	Unconjugated
Product Form:	Liquid
Formulation:	Supplied in Tris Buffered Saline, pH 8.0, with 10 mg/ml BSA and 0.05% Sodium Azide.
Storage:	Shipped at 4°C. Upon delivery aliquot and store at -20°C. Avoid freeze / thaw cycles.
Disclaimer:	This product is for research use only. It is not intended for diagnostic or therapeutic use.

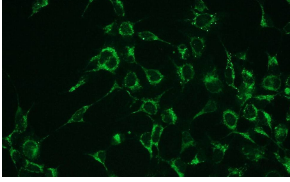
### Images:



Western blot analysis of bax protein in mouse brain extract (A), rat brain extract (B), HEK 293 cells (C) - 200 $\mu$ g of total protein loaded per well. GST-fusion recombinant human bax protein was tested under the same conditions at the concentrations of 100ng (D), 200ng (E), and 500ng (F).

## Anti-BAX Antibody [G26-R] (A8275)

Images continued:



Representative picture of Bax expression in HEK293 cells, visualized with Anti-Bax Antibody (A8275). Primary antibody dilution: 1:100.