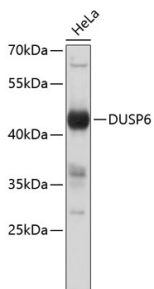


Anti-DUSP6 Antibody (A8444)

Specifications:

Name:	Anti-DUSP6 Antibody
Description:	Rabbit polyclonal antibody to DUSP6.
Applications:	WB, ICC/IF
Recommended Dilutions:	WB: 1:500-1:1,000, ICC/IF: 1:20-1:50
Reactivity:	Human
Immunogen:	Recombinant fusion protein containing a sequence within amino acids 302-381 of human DUSP6 (NP_001937.2).
Sequence:	TVTVAAYLMQKLNLSMNDAYDIVKMKKSNISPNFNFMGQLLDFERTLGLSSPCDNRVPA QQLYFTTPSNQNVYQVDSLQST
Host:	Rabbit
Clonality:	Polyclonal
Isotype:	IgG
Conjugate:	Unconjugated
Purification:	Affinity purification.
Molecular Weight:	45 kDa
Product Form:	Liquid
Formulation:	Supplied in Phosphate Buffered Saline, pH 7.3, with 50% Glycerol and 0.01% Thiomersal.
Storage:	Shipped at 4°C. Upon delivery aliquot and store at -20°C. Avoid freeze / thaw cycles.
Disclaimer:	This product is for research use only. It is not intended for diagnostic or therapeutic use.

Images:



Western blot analysis of extracts of HeLa cells, using Anti-DUSP6 Antibody (A8444). The secondary antibody was Goat Anti-Rabbit IgG H&L Antibody (HRP) at 1:10,000 dilution. Lysates/proteins were present at 25µg per lane. The blocking buffer used was 3% non-fat dry milk in TBST.