

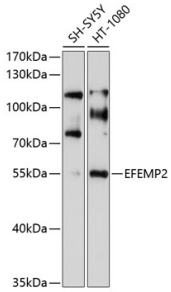
Anti-Fibulin-4 Antibody (A8507)

Specifications:

Name:	Anti-Fibulin-4 Antibody
Description:	Rabbit polyclonal antibody to Fibulin-4.
Applications:	WB
Recommended Dilutions:	WB: 1:500-1:1,000
Reactivity:	Human
Immunogen:	Recombinant fusion protein containing a sequence corresponding to amino acids 26-250 of human EFEMP2 (NP_058634.4).
Sequence:	SPQDSEEPDSYTECTDGYEWD PDSQHCRDVNECLTIPEACKGEMK CINH YGGYLCLPR SAAVINDLHGEGPPPPVPPAQHPNPCPPGYEPDDQDSCVDVDECAQALHDCRPSQDCH NLPGSYQCTCPDGYRKIGPECVDIDECRYRYCQHRCVNLPGSFRCQCEPGFQLGPNNR SCVDVNECDMGAPCEQRCFNSYGTFLCRCHQGYELHRDGFSCSDIDECSYS
Host:	Rabbit
Clonality:	Polyclonal
Isotype:	IgG
Conjugate:	Unconjugated
Purification:	Affinity purification.
Molecular Weight:	55 kDa
Product Form:	Liquid
Formulation:	Supplied in Phosphate Buffered Saline, pH 7.3, with 50% Glycerol and 0.02% Sodium Azide.
Storage:	Shipped at 4°C. Upon delivery aliquot and store at -20°C. Avoid freeze / thaw cycles.
Disclaimer:	This product is for research use only. It is not intended for diagnostic or therapeutic use.

Anti-Fibulin-4 Antibody (A8507)

Images:



Western blot analysis of extracts of various cell lines, using Anti-Fibulin-4 Antibody (A8507) at 1:1,000 dilution. The secondary antibody was Goat Anti-Rabbit IgG H&L Antibody (HRP) at 1:10,000 dilution. Lysates/proteins were present at 25 μ g per lane. The blocking buffer used was 3% non-fat dry milk in TBST. Detection was with a ECL Enhanced Kit (RM00021). Exposure time: 90s.