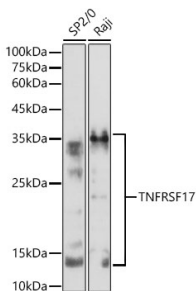


Anti-BCMA Antibody (A8765)

Specifications:

| | |
|------------------------|---|
| Name: | Anti-BCMA Antibody |
| Description: | Rabbit polyclonal antibody to BCMA. |
| Applications: | WB, ICC/IF |
| Recommended Dilutions: | WB: 1:100-1:500, ICC/IF: 1:50-1:200 |
| Reactivity: | Human, Mouse, Rat |
| Immunogen: | A synthetic peptide corresponding to a sequence within amino acids 1-100 of human TNFRSF17 (NP_001183.2). |
| Sequence: | MLQMAGQCSQNEYFDSLLHACIPCQLRCSSNTPPLTCQRYCNASVTNSVKGTNAILWT CLGLSLIISLAVFVLMFLLRKINSEPLKDEFKNTGSGLLGMA |
| Host: | Rabbit |
| Clonality: | Polyclonal |
| Isotype: | IgG |
| Conjugate: | Unconjugated |
| Purification: | Affinity purification. |
| Molecular Weight: | 15 - 35 kDa |
| Product Form: | Liquid |
| Formulation: | Supplied in Phosphate Buffered Saline, pH 7.3, with 50% Glycerol and 0.05% Proclin 300. |
| Storage: | Shipped at 4°C. Upon delivery aliquot and store at -20°C. Avoid freeze / thaw cycles. |
| Disclaimer: | This product is for research use only. It is not intended for diagnostic or therapeutic use. |

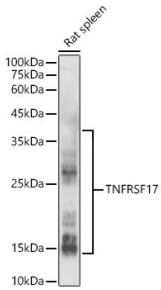
Images:



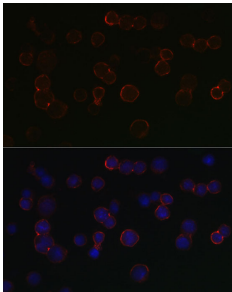
Western blot analysis of extracts of various cell lines, using Anti-BCMA Antibody (A8765) at 1:500 dilution. The secondary antibody was Goat Anti-Rabbit IgG H&L Antibody (HRP) at 1:10,000 dilution. Lysates/proteins were present at 25µg per lane. The blocking buffer used was 3% non-fat dry milk in TBST. Detection was with a ECL Basic Kit. Exposure time: 180s.

Anti-BCMA Antibody (A8765)

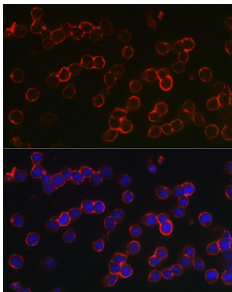
Images continued:



Western blot analysis of extracts of Rat spleen, using Anti-BCMA Antibody (A8765) at 1:500 dilution. The secondary antibody was Goat Anti-Rabbit IgG H&L Antibody (HRP) at 1:10,000 dilution. Lysates/proteins were present at 25 μ g per lane. The blocking buffer used was 3% non-fat dry milk in TBST. Detection was with a ECL Enhanced Kit (RM00021). Exposure time: 180s.



Immunofluorescence analysis of SP2/0 cells using Anti-BCMA Antibody (A8765) at a dilution of 1:100 (40x lens). DAPI was used to stain the cell nuclei (blue).



Immunofluorescence analysis of U-937 cells using Anti-BCMA Antibody (A8765) at a dilution of 1:100 (40x lens). DAPI was used to stain the cell nuclei (blue).