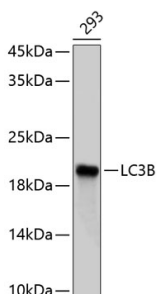


## Anti-LC3B Antibody (A80400)

### Specifications:

Name:	Anti-LC3B Antibody
Description:	Rabbit polyclonal antibody to LC3B.
Applications:	WB, IHC, ICC/IF, IP
Recommended Dilutions:	WB: 1:500-1:2,000, IHC: 1:50-1:200, ICC/IF: 1:50-1:100, IP: 1:20-1:50
Reactivity:	Human, Mouse, Rat
Immunogen:	A synthetic peptide corresponding to a sequence within amino acids 1-50 of human LC3B (NP_073729.1).
Sequence:	MPSEKTFKQRRTFEQRVEDVRLIREQHPTKIPVIIERYKGEKQLPVLDKT
Host:	Rabbit
Clonality:	Polyclonal
Isotype:	IgG
Conjugate:	Unconjugated
Purification:	Affinity purification.
Molecular Weight:	20 kDa
Product Form:	Liquid
Formulation:	Supplied in Phosphate Buffered Saline, pH 7.3, with 50% Glycerol and 0.05% Proclin 300.
Storage:	Shipped at 4°C. Upon delivery aliquot and store at -20°C. Avoid freeze / thaw cycles.
Disclaimer:	This product is for research use only. It is not intended for diagnostic or therapeutic use.

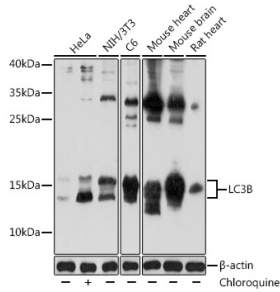
### Images:



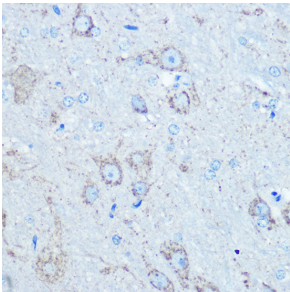
Western blot analysis of extracts of 293 cells, using Anti-LC3B Antibody (A80400). The secondary antibody was Goat Anti-Rabbit IgG H&L Antibody (HRP) at 1:10,000 dilution. Lysates/proteins were present at 25µg per lane. The blocking buffer used was 3% non-fat dry milk in TBST.

## Anti-LC3B Antibody (A80400)

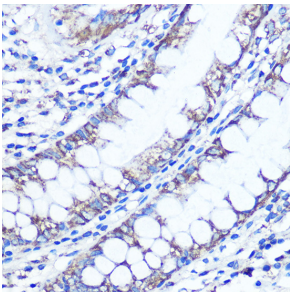
Images continued:



Western blot analysis of extracts of various cell lines, using Anti-LC3B Antibody (A80400) at 1:1,000 dilution. HeLa cells were treated by Chloroquine (50  $\mu$ M) at 37°C for 20 hours. The secondary antibody was Goat Anti-Rabbit IgG H&L Antibody (HRP) at 1:10,000 dilution. Lysates/proteins were present at 25 $\mu$ g per lane. The blocking buffer used was 3% BSA. Detection was with a ECL Basic Kit. Exposure time: 60s.



Immunohistochemistry analysis of paraffin-embedded rat brain using Anti-LC3B Antibody (A80400) at a dilution of 1:100 (40x lens). Perform microwave antigen retrieval with 10 mM PBS buffer pH 7.2 before commencing with IHC staining protocol.



Immunohistochemistry analysis of paraffin-embedded human colon tissue using Anti-LC3B Antibody (A80400) at a dilution of 1:100 (40x lens). Perform microwave antigen retrieval with 10 mM PBS buffer pH 7.2 before commencing with IHC staining protocol.