

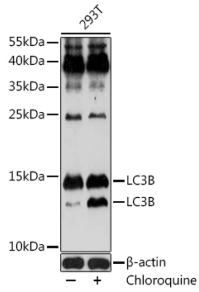
Anti-LC3B Antibody (A80423)

Specifications:

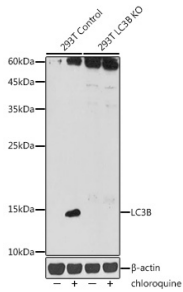
Name:	Anti-LC3B Antibody
Description:	Rabbit polyclonal antibody to LC3B.
Applications:	WB, IHC, ICC/IF
Recommended Dilutions:	WB: 1:500-1:1,000, IHC: 1:50-1:200, ICC/IF: 1:50-1:200
Reactivity:	Human, Mouse, Rat
Immunogen:	Recombinant fusion protein containing a sequence corresponding to amino acids 1-125 of human LC3B (Q9GZQ8).
Sequence:	MPSEKTFKQRRTFEQRVEDVRLIREQHPTKIPVIIERYKGEKQLPVLDTKFLVPDHV NMSELIKIIRRLQLNANQAFFLLVNGHSMVSVSTPISEVYESEKDEDGFLYMVYASQ ETFGMKLSV
Host:	Rabbit
Clonality:	Polyclonal
Isotype:	IgG
Conjugate:	Unconjugated
Purification:	Affinity purification.
Molecular Weight:	14 kDa / 16 kDa
Product Form:	Liquid
Formulation:	Supplied in Phosphate Buffered Saline, pH 7.3, with 50% Glycerol and 0.01% Thiomersal.
Storage:	Shipped at 4°C. Upon delivery aliquot and store at -20°C. Avoid freeze / thaw cycles.
Disclaimer:	This product is for research use only. It is not intended for diagnostic or therapeutic use.

Anti-LC3B Antibody (A80423)

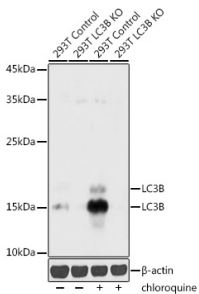
Images:



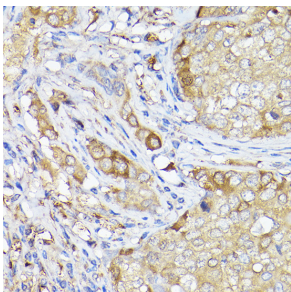
Western blot analysis of extracts of 293T cells, using Anti-LC3B Antibody (A80423) at 1:1,000 dilution. 293T cells were treated by Chloroquine (50 μ M) at 37°C for 20 hours. The secondary antibody was Goat Anti-Rabbit IgG H&L Antibody (HRP) at 1:10,000 dilution. Lysates/proteins were present at 25 μ g per lane. The blocking buffer used was 3% BSA. Detection was with a ECL Enhanced Kit (RM00021). Exposure time: 180s.



Western blot analysis of extracts from normal (control) and LC3B knockout (KO) 293T cells, using Anti-LC3B Antibody (A80423) at 1:1,000 dilution. 293T cells were treated by Chloroquine (50 μ M) at 37°C for 20 hours. The secondary antibody was Goat Anti-Rabbit IgG H&L Antibody (HRP) at 1:10,000 dilution. Lysates/proteins were present at 25 μ g per lane. The blocking buffer used was 3% non-fat dry milk in TBST. Detection was with a ECL Enhanced Kit (RM00021). Exposure time: 180s.



Western blot analysis of extracts from normal (control) and LC3B knockout (KO) 293T cells, using Anti-LC3B Antibody (A80423) at 1:1,000 dilution. 293T cells were treated by Chloroquine (50 μ M) at 37°C for 20 hours. The secondary antibody was Goat Anti-Rabbit IgG H&L Antibody (HRP) at 1:10,000 dilution. Lysates/proteins were present at 25 μ g per lane. The blocking buffer used was 3% non-fat dry milk in TBST. Detection was with a ECL Basic Kit. Exposure time: 60s.



Immunohistochemistry analysis of paraffin-embedded human breast cancer tissue using Anti-LC3B Antibody (A80423) at a dilution of 1:100 (40x lens). Perform high pressure antigen retrieval with 10 mM citrate buffer pH 6.0 before commencing with IHC staining protocol.