

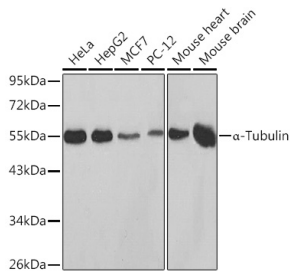
Anti-alpha Tubulin Antibody (A80425)

Specifications:

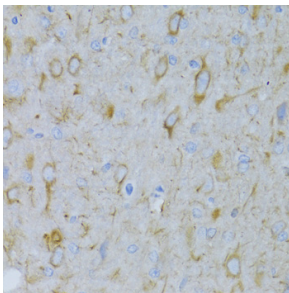
Name:	Anti-alpha Tubulin Antibody
Description:	Rabbit polyclonal antibody to alpha Tubulin.
Applications:	WB, IHC, ICC/IF
Recommended Dilutions:	WB: 1:500-1:2,000, IHC: 1:25-1:50, ICC/IF: 1:50-1:200
Reactivity:	Human, Mouse, Rat
Immunogen:	Recombinant fusion protein containing a sequence corresponding to amino acids 1-180 of human α -Tubulin (P68366).
Sequence:	MRECISVHVGQAGVQMGNACWELYCLEHGIQPDGQMPSDKTIGGGDDSFTTFFCETGA GKHVPRAVFDLEPTVIDEIRNGPYRQLFHPEQLITGKEDAANNYARGHYTIGKEIID PVLDRIRKLSDQCTGLQGFLVFHSFGGGTGSFGFTSLLMERLSVDYGGKSKLEFSIYPA PQVSTA
Host:	Rabbit
Clonality:	Polyclonal
Isotype:	IgG
Conjugate:	Unconjugated
Purification:	Affinity purification.
Molecular Weight:	55 kDa
Product Form:	Liquid
Formulation:	Supplied in Phosphate Buffered Saline, pH 7.3, with 50% Glycerol and 0.01% Thiomersal.
Storage:	Shipped at 4°C. Upon delivery aliquot and store at -20°C. Avoid freeze / thaw cycles.
Disclaimer:	This product is for research use only. It is not intended for diagnostic or therapeutic use.

Anti-alpha Tubulin Antibody (A80425)

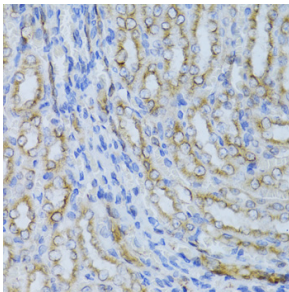
Images:



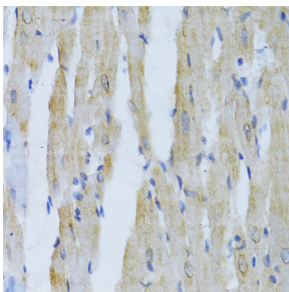
Western blot analysis of extracts of various cell lines, using Anti-alpha Tubulin Antibody (A80425) at 1:10,000 dilution. Lysates/proteins were present at 25µg per lane. The blocking buffer used was 3% non-fat dry milk in TBST. Detection was with a ECL Basic Kit.



Immunohistochemistry analysis of paraffin-embedded rat brain using Anti-alpha Tubulin Antibody (A80425). Immunohistochemistry analysis of paraffin-embedded rat brain using alpha-Tubulin Antibody (AC014) at a dilution of 1:100 (40x lens). Perform microwave antigen retrieval with 10 mM PBS buffer pH 7.2 before commencing with IHC staining protocol.



Immunohistochemistry analysis of paraffin-embedded rat kidney using Anti-alpha Tubulin Antibody (A80425). Immunohistochemistry analysis of paraffin-embedded rat kidney using alpha-Tubulin Antibody (AC014) at a dilution of 1:100 (40x lens). Perform microwave antigen retrieval with 10 mM PBS buffer pH 7.2 before commencing with IHC staining protocol.



Immunohistochemistry analysis of paraffin-embedded rat heart using Anti-alpha Tubulin Antibody (A80425). Immunohistochemistry analysis of paraffin-embedded rat heart using alpha-Tubulin Antibody (AC014) at a dilution of 1:100 (40x lens). Perform microwave antigen retrieval with 10 mM PBS buffer pH 7.2 before commencing with IHC staining protocol.