

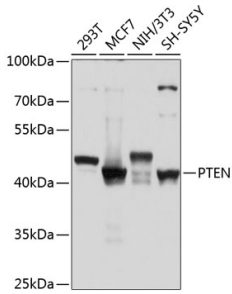
Anti-PTEN Antibody (A80529)

Specifications:

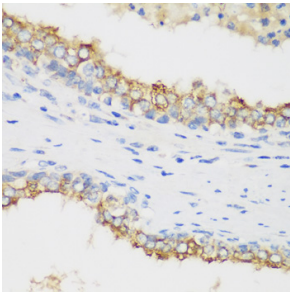
Name:	Anti-PTEN Antibody
Description:	Rabbit polyclonal antibody to PTEN.
Applications:	WB, IHC
Recommended Dilutions:	WB: 1:500-1:2,000, IHC: 1:50-1:100
Reactivity:	Human, Mouse
Immunogen:	Recombinant fusion protein containing a sequence corresponding to amino acids 224-403 of human PTEN (NP_000305.3).
Sequence:	IYSSNSGPTRRREDKFMFYFEFPQPLPVCGLKVEFFHKQNKMLKKDKMFHFVWNTFFIP GPEETSEKVENGLCDQEIDSICSIERADNDKEYLVLTLTKNLDKANKDKANRYFSP NFKVKLYFTKTVEEPSNPEASSSTSVTPDVSDNEPDHYRYSDDTSDPENEPFDEDQH TQITKV
Host:	Rabbit
Clonality:	Polyclonal
Isotype:	IgG
Conjugate:	Unconjugated
Purification:	Affinity purification.
Molecular Weight:	47 kDa
Product Form:	Liquid
Formulation:	Supplied in Phosphate Buffered Saline, pH 7.3, with 50% Glycerol and 0.02% Sodium Azide.
Storage:	Shipped at 4°C. Upon delivery aliquot and store at -20°C. Avoid freeze / thaw cycles.
Disclaimer:	This product is for research use only. It is not intended for diagnostic or therapeutic use.

Anti-PTEN Antibody (A80529)

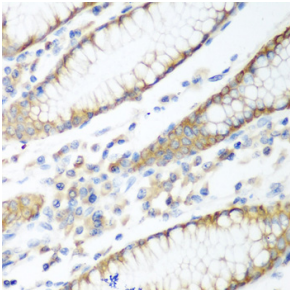
Images:



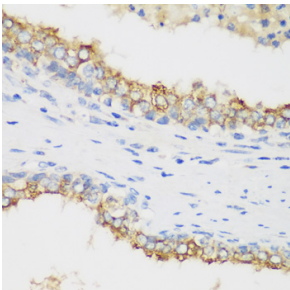
Western blot analysis of extracts of various cell lines, using Anti-PTEN Antibody (A80529) at 1:1,000 dilution. The secondary antibody was Goat Anti-Rabbit IgG H&L Antibody (HRP) at 1:10,000 dilution. Lysates/proteins were present at 25 μ g per lane. The blocking buffer used was 3% non-fat dry milk in TBST. Detection was with a ECL Basic Kit. Exposure time: 15s.



Immunohistochemistry analysis of paraffin-embedded human prostate using Anti-PTEN Antibody (A80529) at a dilution of 1:100 (40x lens).



Immunohistochemistry analysis of paraffin-embedded human stomach using Anti-PTEN Antibody (A80529) at a dilution of 1:100 (40x lens).



Immunohistochemistry analysis of paraffin-embedded human prostate using Anti-PTEN Antibody (A80529) at a dilution of 1:200 (40x lens).