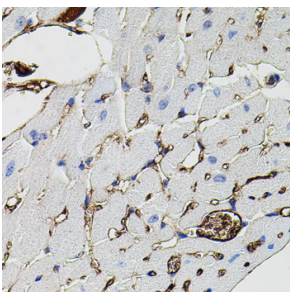


## Anti-MMP9 Antibody (A80541)

### Specifications:

Name:	Anti-MMP9 Antibody
Description:	Rabbit polyclonal antibody to MMP9.
Applications:	IHC
Recommended Dilutions:	IHC: 1:100-1:200
Reactivity:	Human, Mouse
Immunogen:	A synthetic peptide corresponding to a sequence within amino acids 400-500 of human MMP9 (NP_004985.2).
Sequence:	AHEFGHALGLDHSSVPEALMYPMYRFTEGPPLHKDDVNGIRHLYGPRPEPEPRPPTTT TPQPTAPPTVCPTGPPTVHPSERPTAGPTGPPSAGPTGPPTAG
Host:	Rabbit
Clonality:	Polyclonal
Isotype:	IgG
Conjugate:	Unconjugated
Purification:	Affinity purification.
Product Form:	Liquid
Formulation:	Supplied in Phosphate Buffered Saline, pH 7.3, with 50% Glycerol and 0.02% Sodium Azide.
Storage:	Shipped at 4°C. Upon delivery aliquot and store at -20°C. Avoid freeze / thaw cycles.
Disclaimer:	This product is for research use only. It is not intended for diagnostic or therapeutic use.

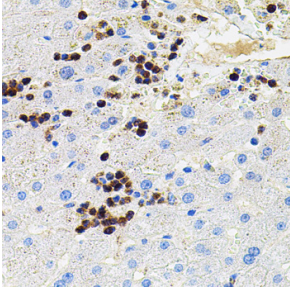
### Images:



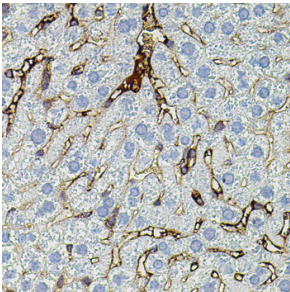
Immunohistochemistry analysis of paraffin-embedded mouse heart using Anti-MMP9 Antibody (A80541) at a dilution of 1:100 (40x lens).

## Anti-MMP9 Antibody (A80541)

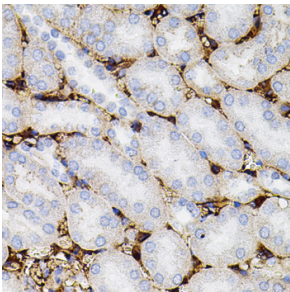
Images continued:



Immunohistochemistry analysis of paraffin-embedded human liver damage using Anti-MMP9 Antibody (A80541) at a dilution of 1:100 (40x lens).



Immunohistochemistry analysis of paraffin-embedded mouse liver using Anti-MMP9 Antibody (A80541) at a dilution of 1:100 (40x lens).



Immunohistochemistry analysis of paraffin-embedded mouse kidney using Anti-MMP9 Antibody (A80541) at a dilution of 1:100 (40x lens).