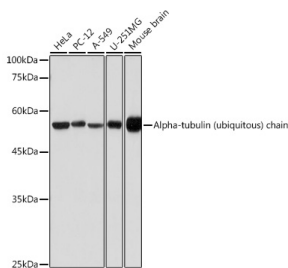


Anti-Tubulin Antibody (A80592)

Specifications:

Name:	Anti-Tubulin Antibody
Description:	Rabbit polyclonal antibody to Tubulin.
Applications:	WB, IHC, ICC/IF
Recommended Dilutions:	WB: 1:100-1:500, IHC: 1:50-1:200, ICC/IF: 1:50-1:200
Reactivity:	Human, Mouse, Rat
Immunogen:	Recombinant fusion protein containing a sequence within amino acids 1-80 of human Alpha-tubulin (ubiquitous) chain (NP_006073.2).
Sequence:	MRECISIHVGQAGVQIGNACWELYCLEHGIQPDGQMPSDKTIGGGDDSFNTFFSETGA GKHVPRAVFVDLEPTVIDEVRT
Host:	Rabbit
Clonality:	Polyclonal
Isotype:	IgG
Conjugate:	Unconjugated
Purification:	Affinity purification.
Molecular Weight:	52 kDa
Product Form:	Liquid
Formulation:	Supplied in Phosphate Buffered Saline, pH 7.3, with 50% Glycerol and 0.01% Thiomersal.
Storage:	Shipped at 4°C. Upon delivery aliquot and store at -20°C. Avoid freeze / thaw cycles.
Disclaimer:	This product is for research use only. It is not intended for diagnostic or therapeutic use.

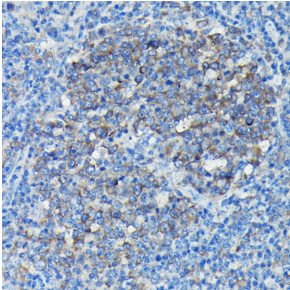
Images:



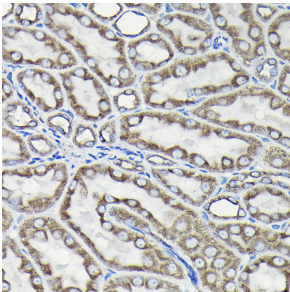
Western blot analysis of extracts of various cell lines, using Anti-Tubulin Antibody (A80592) at 1:10,000 dilution. Lysates/proteins were present at 25µg per lane. The blocking buffer used was 3% non-fat dry milk in TBST. Detection was with a ECL Basic Kit. Exposure time: 1s.

Anti-Tubulin Antibody (A80592)

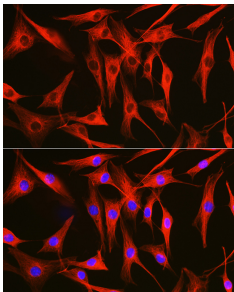
Images continued:



Immunohistochemistry analysis of paraffin-embedded mouse spleen using Anti-Tubulin Antibody (A80592) Immunohistochemistry analysis of paraffin-embedded Mouse spleen using Alpha-tubulin (ubiquitous) chain antibody (AC024) at a dilution of 1:50 (40x lens). Perform high pressure antigen retrieval with 10 mM citrate buffer pH 6.0 before commencing with IHC staining protocol.



Immunohistochemistry analysis of paraffin-embedded rat kidney using Anti-Tubulin Antibody (A80592) Immunohistochemistry analysis of paraffin-embedded Rat kidney using Alpha-tubulin (ubiquitous) chain antibody (AC024) at a dilution of 1:50 (40x lens). Perform high pressure antigen retrieval with 10 mM citrate buffer pH 6.0 before commencing with IHC staining protocol.



Immunofluorescence analysis of NIH/3T3 cells using Anti-Tubulin Antibody (A80592) at a dilution of 1:100. DAPI was used to stain the cell nuclei (blue).