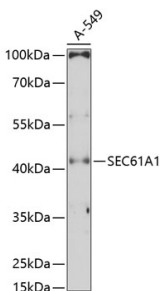


## Anti-SEC61A Antibody (A80623)

### Specifications:

Name:	Anti-SEC61A Antibody
Description:	Rabbit polyclonal antibody to SEC61A.
Applications:	WB, ICC/IF
Recommended Dilutions:	WB: 1:500-1:2,000, ICC/IF: 1:100-1:500
Reactivity:	Human, Mouse, Rat
Immunogen:	Recombinant fusion protein containing a sequence corresponding to amino acids 310-420 of human SEC61A1 (NP_037468.1).
Sequence:	ARFSGNLLVSL LGTWSDTSSGGPARAYPVGGLCYLSPPEFSGSVLEDPVHAVVYIVF MLGSCAFFSKTWIEVSGSSAKDVAKQLKEQQMVMRGRHRETSMVHELNRYIPTA
Host:	Rabbit
Clonality:	Polyclonal
Isotype:	IgG
Conjugate:	Unconjugated
Purification:	Affinity purification.
Molecular Weight:	52 kDa
Product Form:	Liquid
Formulation:	Supplied in Phosphate Buffered Saline, pH 7.3, with 50% Glycerol and 0.01% Thiomersal.
Storage:	Shipped at 4°C. Upon delivery aliquot and store at -20°C. Avoid freeze / thaw cycles.
Disclaimer:	This product is for research use only. It is not intended for diagnostic or therapeutic use.

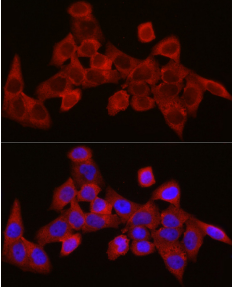
### Images:



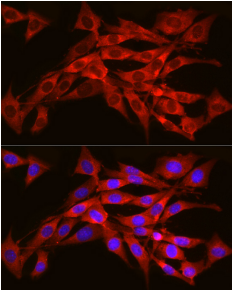
Western blot analysis of extracts of A-549 cells, using Anti-SEC61A Antibody (A80623) at 1:3,000 dilution. The secondary antibody was Goat Anti-Rabbit IgG H&L Antibody (HRP) at 1:10,000 dilution. Lysates/proteins were present at 25µg per lane. The blocking buffer used was 3% non-fat dry milk in TBST. Detection was with a ECL Enhanced Kit (RM00021). Exposure time: 90s.

## Anti-SEC61A Antibody (A80623)

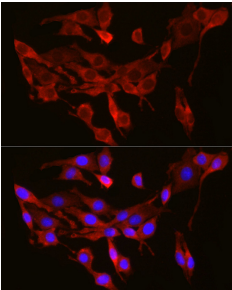
Images continued:



Immunofluorescence analysis of HeLa cells using Anti-SEC61A Antibody (A80623) at a dilution of 1:300 (40x lens). DAPI was used to stain the cell nuclei (blue).



Immunofluorescence analysis of NIH/3T3 cells using Anti-SEC61A Antibody (A80623) at a dilution of 1:300 (40x lens). DAPI was used to stain the cell nuclei (blue).



Immunofluorescence analysis of PC-12 cells using Anti-SEC61A Antibody (A80623) at a dilution of 1:300 (40x lens). DAPI was used to stain the cell nuclei (blue).