

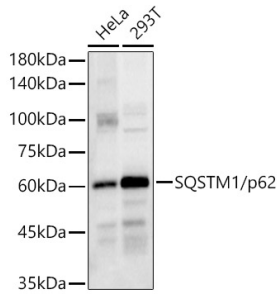
## Anti-SQSTM1 / p62 Antibody (A80668)

### Specifications:

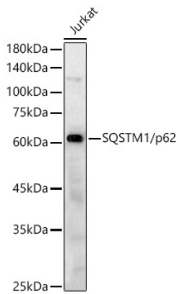
Name:	Anti-SQSTM1 / p62 Antibody
Description:	Rabbit polyclonal antibody to SQSTM1 / p62.
Applications:	WB, IHC, ICC/IF, IP
Recommended Dilutions:	WB: 1:500-1:1,000, IHC: 1:50-1:200, ICC/IF: 1:50-1:200, IP: 1:50-1:200
Reactivity:	Human, Mouse, Rat
Immunogen:	Recombinant fusion protein containing a sequence corresponding to amino acids 1-440 of human SQSTM1/p62 (NP_003891.1).
Sequence:	MASLTVKAYLLGKEDAAREIRRFSCCSPEPEAEAEAAAGPGPCERLLSRVAALFPAL RPGGFQAHYRDEDGDLVAFSSDEELTMAMSYVKDDIFRIYIKEKKECRRDHRPPCAQE APRNMVHPNVICDGCNGPVVGTRYKCSVCPDYDLCSVCEGKGLHRGHTKLAFPSFGH LSEGFSHSRWLRKVKHGHFGWPGWEMGPPGNWSPRPPRAGEARPGPTAESASGPSEDP SVNFLKNVGESVAAALSPLGIEVDIDVEHGGKRSRLTPVSPESSTEKSSSQPSSCC SDPSKPGGNVEGATQSLAEQMRKIALESEGRPEEQMESDNCSSGGDDWTHLSSKEVDP STGELQSLQMPESSEGPSSLDPSQEGPTGLKEAALYPHPPEADPRLIESLSQMLSMGF SDEGGWLTRLLQTKNYDIGAALDTIQYSKHPPPL
Host:	Rabbit
Clonality:	Polyclonal
Isotype:	IgG
Conjugate:	Unconjugated
Purification:	Affinity purification.
Molecular Weight:	62 kDa
Product Form:	Liquid
Formulation:	Supplied in Phosphate Buffered Saline, pH 7.3, with 50% Glycerol and 0.05% Proclin 300.
Storage:	Shipped at 4°C. Upon delivery aliquot and store at -20°C. Avoid freeze / thaw cycles.
Disclaimer:	This product is for research use only. It is not intended for diagnostic or therapeutic use.

## Anti-SQSTM1 / p62 Antibody (A80668)

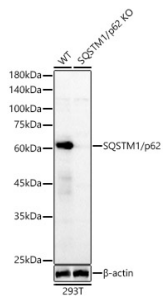
### Images:



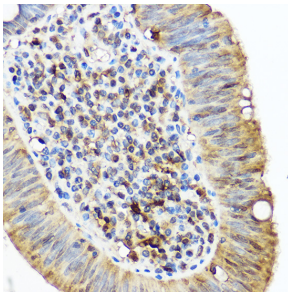
Western blot analysis of extracts of various cell lines, using Anti-SQSTM1 / p62 Antibody (A80668) at 1:1,000 dilution. The secondary antibody was Goat Anti-Rabbit IgG H&L Antibody (HRP) at 1:10,000 dilution. Lysates/proteins were present at 25 $\mu$ g per lane. The blocking buffer used was 3% non-fat dry milk in TBST. Detection was with a ECL Basic Kit. Exposure time: 10s.



Western blot analysis of Jurkat, using Anti-SQSTM1 / p62 Antibody (A80668) at 1:400 dilution. The secondary antibody was Goat Anti-Rabbit IgG H&L Antibody (HRP) at 1:10,000 dilution. Lysates/proteins were present at 25 $\mu$ g per lane. The blocking buffer used was 3% non-fat dry milk in TBST. Detection was with a ECL Basic Kit. Exposure time: 30s.



Western blot analysis of extracts from wild type (WT) and SQSTM1/p62 knockout (KO) 293T(KO) cells, using Anti-SQSTM1 / p62 Antibody (A80668) at 1:400 dilution. The secondary antibody was Goat Anti-Rabbit IgG H&L Antibody (HRP) at 1:10,000 dilution. Lysates/proteins were present at 25 $\mu$ g per lane. The blocking buffer used was 3% non-fat dry milk in TBST. Detection was with a ECL Basic Kit. Exposure time: 30s.



Immunohistochemistry analysis of paraffin-embedded human colon carcinoma tissue using Anti-SQSTM1 / p62 Antibody (A80668) at a dilution of 1:50 (40x lens). Perform high pressure antigen retrieval with 10 mM citrate buffer pH 6.0 before commencing with IHC staining protocol.