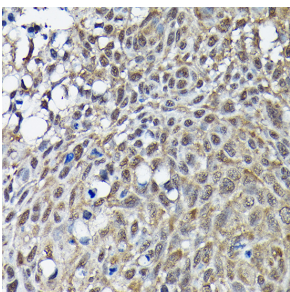


## Anti-BRCA1 Antibody (A80824)

### Specifications:

Name:	Anti-BRCA1 Antibody
Description:	Rabbit polyclonal antibody to BRCA1.
Applications:	IHC, ICC/IF
Recommended Dilutions:	IHC: 1:50-1:200, ICC/IF: 1:50-1:200
Reactivity:	Human
Immunogen:	A synthetic peptide corresponding to a sequence within amino acids 100-200 of human BRCA1 (NP_009225.1).
Sequence:	EYANSYNFAKKENNSPEHLKDEVSIIQSMGYRNRKRLLQSEPENPSLQETSLSVQLS NLGTVRTLRTKQRIQPQKTSVYIELGSDSSEDTVNKATYCSVG
Host:	Rabbit
Clonality:	Polyclonal
Isotype:	IgG
Conjugate:	Unconjugated
Purification:	Affinity purification.
Product Form:	Liquid
Formulation:	Supplied in Phosphate Buffered Saline, pH 7.3, with 50% Glycerol and 0.02% Sodium Azide.
Storage:	Shipped at 4°C. Upon delivery aliquot and store at -20°C. Avoid freeze / thaw cycles.
Disclaimer:	This product is for research use only. It is not intended for diagnostic or therapeutic use.

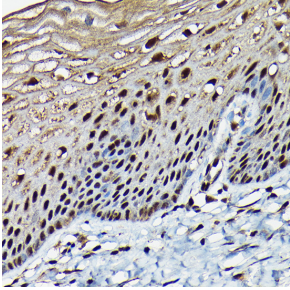
### Images:



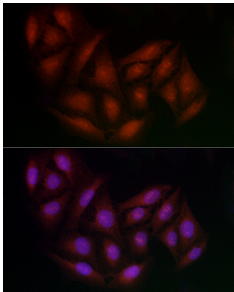
Immunohistochemistry analysis of paraffin-embedded human lung cancer using Anti-BRCA1 Antibody (A80824) at a dilution of 1:100 (40x lens). Perform high pressure antigen retrieval with 10 mM citrate buffer pH 6.0 before commencing with IHC staining protocol.

## Anti-BRCA1 Antibody (A80824)

Images continued:



Immunohistochemistry analysis of paraffin-embedded human normal cervix using Anti-BRCA1 Antibody (A80824) at a dilution of 1:100 (40x lens). Perform high pressure antigen retrieval with 10 mM citrate buffer pH 6.0 before commencing with IHC staining protocol.



Immunofluorescence analysis of U2OS using Anti-BRCA1 Antibody (A80824) at a dilution of 1:100 (40x lens). DAPI was used to stain the cell nuclei (blue).