

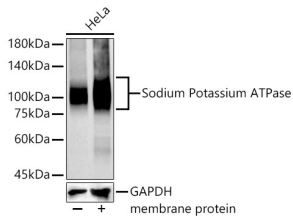
Anti-Sodium Potassium ATPase Antibody [ARC0674] (A80864)

Specifications:

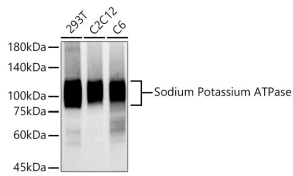
Name:	Anti-Sodium Potassium ATPase Antibody [ARC0674]
Description:	Rabbit monoclonal [ARC0674] antibody to Sodium Potassium ATPase.
Applications:	WB, IHC, ICC/IF
Recommended Dilutions:	WB: 1:10,000-1:1:120,000, IHC: 1:50-1:200, ICC/IF: 1:50-1:200
Reactivity:	Human, Mouse, Rat
Immunogen:	A synthetic peptide corresponding to a sequence within amino acids 1-100 of human Na ⁺ /K ⁺ -ATPase (P05023).
Sequence:	MGKGVGRDKYEPAAVSEQGDKKGGKGGKDRDMDELKKEVSMDDHKLSLDELHRKYGTD LSRGLTSARAAEILARDGPNALTPPPTTPEWIKFCRQLFGGF
Host:	Rabbit
Clonality:	Monoclonal
Clone ID:	ARC0674
Isotype:	IgG
Conjugate:	Unconjugated
Purification:	Affinity purification.
Molecular Weight:	113 kDa
Product Form:	Liquid
Formulation:	Supplied in Phosphate Buffered Saline, pH 7.3, with 50% Glycerol, 0.05% BSA, and 0.02% Sodium Azide.
Storage:	Shipped at 4°C. Upon delivery aliquot and store at -20°C. Avoid freeze / thaw cycles.
Disclaimer:	This product is for research use only. It is not intended for diagnostic or therapeutic use.

Anti-Sodium Potassium ATPase Antibody [ARC0674] (A80864)

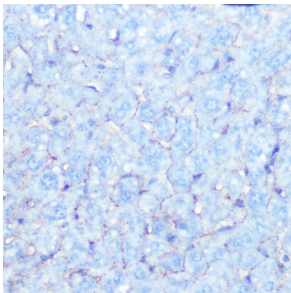
Images:



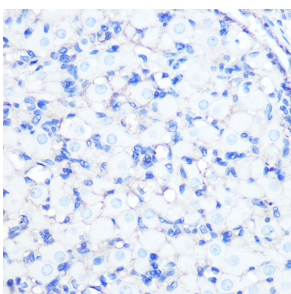
Western blot analysis of HeLa, using Anti-Sodium Potassium ATPase Antibody [ARC0674] (A80864) at 1:50,000 dilution. membrane protein extract isolated from HeLa. The secondary antibody was Goat Anti-Rabbit IgG H&L Antibody (HRP) at 1:10,000 dilution. Lysates/proteins were present at 25µg per lane. The blocking buffer used was 3% non-fat dry milk in TBST. Detection was with a ECL Basic Kit. Exposure time: 30s.



Western blot analysis of various lysates, using Anti-Sodium Potassium ATPase Antibody [ARC0674] (A80864) at 1:50,000 dilution. membrane protein extract isolated from HeLa. The secondary antibody was Goat Anti-Rabbit IgG H&L Antibody (HRP) at 1:10,000 dilution. Lysates/proteins were present at 25µg per lane. The blocking buffer used was 3% non-fat dry milk in TBST. Detection was with a ECL Basic Kit. Exposure time: 30s.



Immunohistochemistry analysis of paraffin-embedded mouse liver using Anti-Sodium Potassium ATPase Antibody [ARC0674] (A80864) at a dilution of 1:100 (40x lens). Perform microwave antigen retrieval with 10 mM PBS buffer pH 7.2 before commencing with IHC staining protocol.



Immunohistochemistry analysis of paraffin-embedded rat ovary using Anti-Sodium Potassium ATPase Antibody [ARC0674] (A80864) at a dilution of 1:100 (40x lens). Perform microwave antigen retrieval with 10 mM PBS buffer pH 7.2 before commencing with IHC staining protocol.