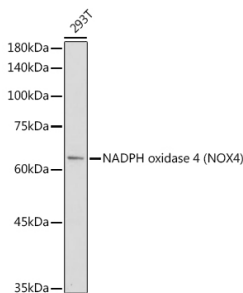


## Anti-NADPH oxidase 4 Antibody (A81032)

### Specifications:

Name:	Anti-NADPH oxidase 4 Antibody
Description:	Rabbit polyclonal antibody to NADPH oxidase 4.
Applications:	WB, IHC
Recommended Dilutions:	WB: 1:500-1:1,000, IHC: 1:50-1:200
Reactivity:	Human, Mouse, Rat
Immunogen:	A synthetic peptide corresponding to a sequence within amino acids 479-578 of human NADPH oxidase 4 (NOX4) (NP_058627.2).
Sequence:	LHNKFWQENRPDYVNIQLYLSQTDGIQKIIGEKYHALNSRLFGRPRWKLDFDEIAKY NRGKTVGVFCCGPNSLSKTLHKLSNQNNNSYGTRFEYNKESFS
Host:	Rabbit
Clonality:	Polyclonal
Isotype:	IgG
Conjugate:	Unconjugated
Purification:	Affinity purification.
Molecular Weight:	65 kDa
Product Form:	Liquid
Formulation:	Supplied in Phosphate Buffered Saline, pH 7.3, with 50% Glycerol and 0.05% Proclin 300.
Storage:	Shipped at 4°C. Upon delivery aliquot and store at -20°C. Avoid freeze / thaw cycles.
Disclaimer:	This product is for research use only. It is not intended for diagnostic or therapeutic use.

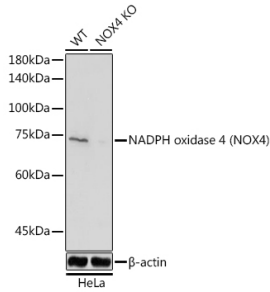
### Images:



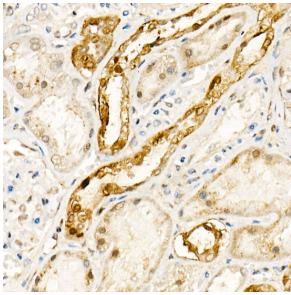
Western blot analysis of extracts of 293T cells, using Anti-NADPH oxidase 4 Antibody (A81032) at 1:1,000 dilution. The secondary antibody was Goat Anti-Rabbit IgG H&L Antibody (HRP) at 1:10,000 dilution. Lysates/proteins were present at 25µg per lane. The blocking buffer used was 3% non-fat dry milk in TBST. Detection was with a ECL Basic Kit. Exposure time: 90s.

## Anti-NADPH oxidase 4 Antibody (A81032)

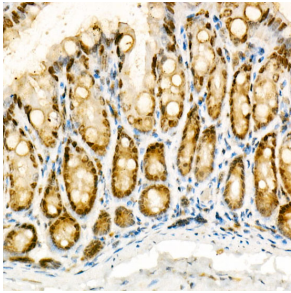
Images continued:



Western blot analysis of extracts from normal (control) and NADPH oxidase 4 (NOX4) Rabbit polyclonal antibody knockout (KO) HeLa cells, using Anti-NADPH oxidase 4 Antibody (A81032) at 1:1,000 dilution. The secondary antibody was Goat Anti-Rabbit IgG H&L Antibody (HRP) at 1:10,000 dilution. Lysates/proteins were present at 25 $\mu$ g per lane. The blocking buffer used was 3% non-fat dry milk in TBST. Detection was with a ECL Basic Kit. Exposure time: 60s.



Immunohistochemistry analysis of paraffin-embedded human kidney using Anti-NADPH oxidase 4 Antibody (A81032) at a dilution of 1:100 (40x lens). Perform high pressure antigen retrieval with 10 mM citrate buffer pH 6.0 before commencing with IHC staining protocol.



Immunohistochemistry analysis of paraffin-embedded mouse colon using Anti-NADPH oxidase 4 Antibody (A81032) at a dilution of 1:100 (40x lens). Perform high pressure antigen retrieval with 10 mM citrate buffer pH 6.0 before commencing with IHC staining protocol.