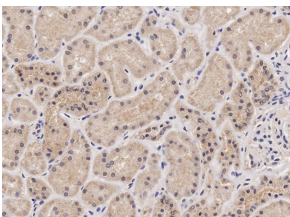


## Anti-NIPBL Antibody (A82755)

### Specifications:

Name:	Anti-NIPBL Antibody
Description:	Goat polyclonal antibody to NIPBL.
Applications:	ELISA, IHC, IF
Reactivity:	Human
Immunogen:	Synthetic peptide corresponding to Human NIPBL (internal region).
Sequence:	C-RPDSPRVKQGDSNK
Host:	Goat
Clonality:	Polyclonal
Isotype:	IgG
Conjugate:	Unconjugated
Purification:	Purified from goat serum by ammonium sulphate precipitation followed by antigen affinity chromatography using the immunizing peptide.
Concentration:	100 µg at 0.5 mg/ml.
Product Form:	Liquid
Formulation:	Supplied in Tris Buffered Saline, pH 7.30, with 0.02% Sodium Azide and 0.5% BSA.
Storage:	Shipped at 4°C. Upon delivery aliquot and store at -20°C. Avoid freeze / thaw cycles.
Disclaimer:	This product is for research use only. It is not intended for diagnostic or therapeutic use.

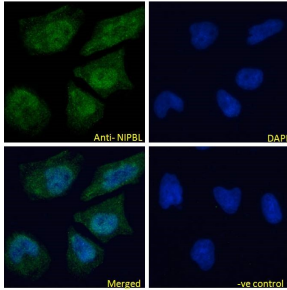
### Images:



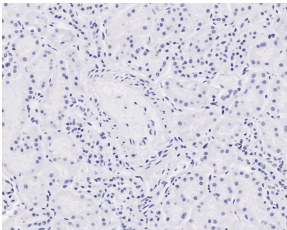
Anti-NIPBL Antibody (A82755) (2µg/ml) staining of paraffin embedded Human Kidney. Microwaved antigen retrieval with citrate buffer pH 6, HRP-staining.

## Anti-NIPBL Antibody (A82755)

Images continued:



Anti-NIPBL Antibody (A82755) Immunofluorescence analysis of paraformaldehyde fixed HeLa cells, permeabilized with 0.15% Triton. Primary incubation 1hr (10 $\mu$ g/ml) followed by Alexa Fluor 488 secondary antibody (4 $\mu$ g/ml), showing nuclear and cytoplasmic staining. The nuclear stain is DAPI (blue). Negative control: Unimmunized goat IgG (10 $\mu$ g/ml) followed by Alexa Fluor 488 secondary antibody (4 $\mu$ g/ml).



Anti-NIPBL Antibody (A82755) Negative Control showing staining of paraffin embedded Human Cerebellum, with no primary antibody.