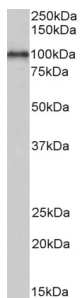


Anti-ADAM12 Antibody (A82884)

Specifications:

| | |
|----------------|---|
| Name: | Anti-ADAM12 Antibody |
| Description: | Goat polyclonal antibody to ADAM12. |
| Applications: | ELISA, WB |
| Reactivity: | Human, Mouse, Rat, Porcine |
| Immunogen: | Synthetic peptide corresponding to Human ADAM12 (internal region). |
| Sequence: | C-REFQRQGKDLEKVKQ |
| Host: | Goat |
| Clonality: | Polyclonal |
| Isotype: | IgG |
| Conjugate: | Unconjugated |
| Purification: | Purified from goat serum by ammonium sulphate precipitation followed by antigen affinity chromatography using the immunizing peptide. |
| Concentration: | 100 µg at 0.5 mg/ml. |
| Product Form: | Liquid |
| Formulation: | Supplied in Tris Buffered Saline, pH 7.30, with 0.02% Sodium Azide and 0.5% BSA. |
| Storage: | Shipped at 4°C. Upon delivery aliquot and store at -20°C. Avoid freeze / thaw cycles. |
| Disclaimer: | This product is for research use only. It is not intended for diagnostic or therapeutic use. |

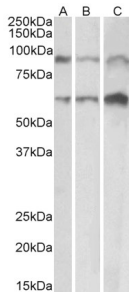
Images:



Anti-ADAM12 Antibody (A82884) (0.1 µg/ml) staining of Human Heart lysate (35 µg protein in RIPA buffer). Primary incubation was 1 hour. Detected by chemiluminescence.

Anti-ADAM12 Antibody (A82884)

Images continued:



Anti-ADAM12 Antibody (A82884) (0.1 $\mu\text{g}/\text{ml}$) staining of Mouse (A), Rat (B) and Pig (C) Heart lysate (35 μg protein in RIPA buffer). Primary incubation was 1 hour. Detected by chemiluminescence.