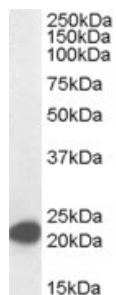


## Anti-MAX Antibody (A82896)

### Specifications:

Name:	Anti-MAX Antibody
Description:	Goat polyclonal antibody to MAX.
Applications:	ELISA, WB, IF, IHC
Reactivity:	Human
Immunogen:	Synthetic peptide corresponding to Human MAX (C terminal).
Sequence:	C-EEPQSRKKLRMEAS
Host:	Goat
Clonality:	Polyclonal
Isotype:	IgG
Conjugate:	Unconjugated
Purification:	Purified from goat serum by ammonium sulphate precipitation followed by antigen affinity chromatography using the immunizing peptide.
Concentration:	100 µg at 0.5 mg/ml.
Product Form:	Liquid
Formulation:	Supplied in Tris Buffered Saline, pH 7.30, with 0.02% Sodium Azide and 0.5% BSA.
Storage:	Shipped at 4°C. Upon delivery aliquot and store at -20°C. Avoid freeze / thaw cycles.
Disclaimer:	This product is for research use only. It is not intended for diagnostic or therapeutic use.

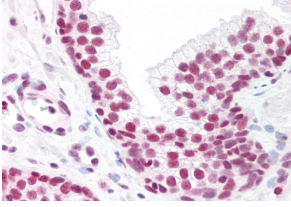
### Images:



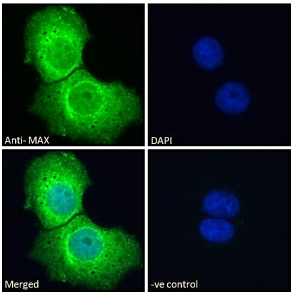
Anti-MAX Antibody (A82896) (0.01µg/ml) staining of Jurkat lysate (35µg protein in RIPA buffer). Detected by chemiluminescence.

## Anti-MAX Antibody (A82896)

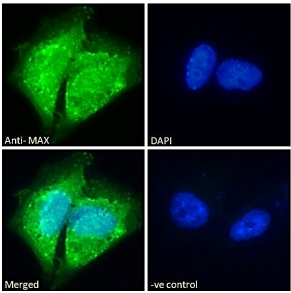
Images continued:



Anti-MAX Antibody (A82896) (10µg/ml) staining of paraffin embedded Human Prostate. Steamed antigen retrieval with citrate buffer pH 6, AP-staining.



Anti-MAX Antibody (A82896) - Immunofluorescence analysis of paraformaldehyde fixed A431 cells, permeabilized with 0.15% Triton. Primary incubation 1hr (10µg/ml) followed by Alexa Fluor 488 secondary antibody (2µg/ml), showing cytoplasmic and nuclear staining.



Anti-MAX Antibody (A82896) - Immunofluorescence analysis of paraformaldehyde fixed U251 cells, permeabilized with 0.15% Triton. Primary incubation 1hr (10µg/ml) followed by Alexa Fluor 488 secondary antibody (2µg/ml), showing cytoplasmic and nuclear staining.