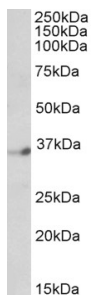


## Anti-DPF1 Antibody (A83032)

### Specifications:

|                |   |
|----------------|---|
| Name:          | Anti-DPF1 Antibody  |
| Description:   | Goat polyclonal antibody to DPF1.   |
| Applications:  | ELISA, IF   |
| Reactivity:    | Human   |
| Immunogen:     | Synthetic peptide corresponding to Human DPF1 (C terminal).   |
| Sequence:      | C-HLKEKASAYITLT   |
| Host:          | Goat  |
| Clonality:     | Polyclonal  |
| Isotype:       | IgG   |
| Conjugate:     | Unconjugated  |
| Purification:  | Purified from goat serum by ammonium sulphate precipitation followed by antigen affinity chromatography using the immunizing peptide. |
| Concentration: | 100 µg at 0.5 mg/ml.  |
| Product Form:  | Liquid  |
| Formulation:   | Supplied in Tris Buffered Saline, pH 7.30, with 0.02% Sodium Azide and 0.5% BSA.  |
| Storage:       | Shipped at 4°C. Upon delivery aliquot and store at -20°C. Avoid freeze / thaw cycles.   |
| Disclaimer:    | This product is for research use only. It is not intended for diagnostic or therapeutic use.  |

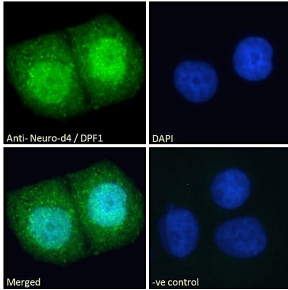
### Images:



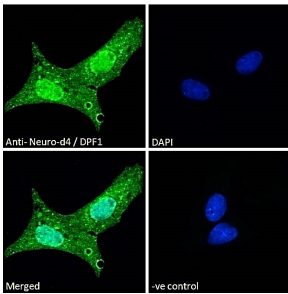
Anti-DPF1 Antibody (A83032) (1 µg/ml) staining of Human Brain (Cerebellum) lysate (35 µg protein in RIPA buffer). Detected by chemiluminescence.

## Anti-DPF1 Antibody (A83032)

Images continued:



Anti-DPF1 Antibody (A83032) - Immunofluorescence analysis of paraformaldehyde fixed MCF7 cells, permeabilized with 0.15% Triton. Primary incubation 1hr (10 $\mu$ g/ml) followed by Alexa Fluor 488 secondary antibody (2 $\mu$ g/ml), showing strong nuclear and weak cytoplasmic staining.



Anti-DPF1 Antibody (A83032) - Immunofluorescence analysis of paraformaldehyde fixed U2OS cells, permeabilized with 0.15% Triton. Primary incubation 1hr (10 $\mu$ g/ml) followed by Alexa Fluor 488 secondary antibody (2 $\mu$ g/ml), showing strong nuclear and weak cytoplasmic staining.