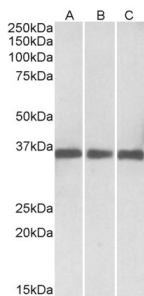


Anti-MDH1 Antibody (A83114)

Specifications:

Name:	Anti-MDH1 Antibody
Description:	Goat polyclonal antibody to MDH1.
Applications:	ELISA, WB
Reactivity:	Human, Mouse, Rat, Porcine
Immunogen:	Synthetic peptide corresponding to Human MDH1 (internal region).
Sequence:	C-PDVNHAKVKLQGK
Host:	Goat
Clonality:	Polyclonal
Isotype:	IgG
Conjugate:	Unconjugated
Purification:	Purified from goat serum by ammonium sulphate precipitation followed by antigen affinity chromatography using the immunizing peptide.
Concentration:	100 µg at 0.5 mg/ml.
Product Form:	Liquid
Formulation:	Supplied in Tris Buffered Saline, pH 7.30, with 0.02% Sodium Azide and 0.5% BSA.
Storage:	Shipped at 4°C. Upon delivery aliquot and store at -20°C. Avoid freeze / thaw cycles.
Disclaimer:	This product is for research use only. It is not intended for diagnostic or therapeutic use.

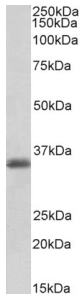
Images:



Anti-MDH1 Antibody (A83114) (0.03µg/ml) staining of Human (A), Mouse(B) and Rat (C) Heart lysates (35µg protein in RIPA buffer). Primary incubation was 1 hour. Detected by chemiluminescence.

Anti-MDH1 Antibody (A83114)

Images continued:



Anti-MDH1 Antibody (A83114) (0.1 $\mu\text{g}/\text{ml}$) staining of Pig Heart lysates (35 μg protein in RIPA buffer). Primary incubation was 1 hour. Detected by chemiluminescence.