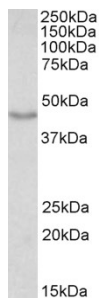


## Anti-Doublecortin Antibody (A83146)

### Specifications:

Name:	Anti-Doublecortin Antibody
Description:	Goat polyclonal antibody to Doublecortin.
Applications:	ELISA, WB, IHC, IF
Reactivity:	Human, Mouse
Immunogen:	Synthetic peptide corresponding to Human DCX (internal region).
Sequence:	C-KTSANMKAPQS
Host:	Goat
Clonality:	Polyclonal
Isotype:	IgG
Conjugate:	Unconjugated
Purification:	Purified from goat serum by ammonium sulphate precipitation followed by antigen affinity chromatography using the immunizing peptide.
Concentration:	100 µg at 0.5 mg/ml.
Product Form:	Liquid
Formulation:	Supplied in Tris Buffered Saline, pH 7.30, with 0.02% Sodium Azide and 0.5% BSA.
Storage:	Shipped at 4°C. Upon delivery aliquot and store at -20°C. Avoid freeze / thaw cycles.
Disclaimer:	This product is for research use only. It is not intended for diagnostic or therapeutic use.

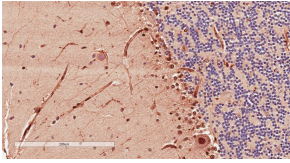
### Images:



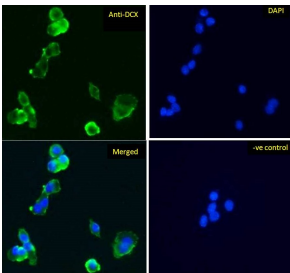
Anti-DCX Antibody (A83146) (0.01µg/ml) staining of Mouse fetal Brain lysate (35µg protein in RIPA buffer). Detected by chemiluminescence.

## Anti-Doublecortin Antibody (A83146)

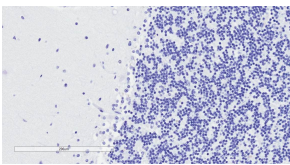
Images continued:



Anti-DCX Antibody (A83146) (2 $\mu$ g/ml) staining of paraffin embedded Human Cerebellum. Microwaved antigen retrieval with citrate buffer pH 6, HRP-staining.



Anti-DCX Antibody (A83146) Immunofluorescence analysis of paraformaldehyde fixed HepG2 cells, permeabilized with 0.15% Triton. Primary incubation 1hr (5 $\mu$ g/ml) followed by Alexa Fluor 488 secondary antibody (1 $\mu$ g/ml), showing cytoplasmic staining. The nuclear stain is DAPI (blue). Negative control: Unimmunized goat IgG (10 $\mu$ g/ml) followed by Alexa Fluor 488 secondary antibody (1 $\mu$ g/ml).



Anti-DCX Antibody (A83146) Negative Control showing staining of paraffin embedded Human Cerebellum, with no primary antibody.