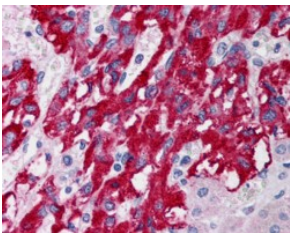


## Anti-DLC1 Antibody (A83189)

### Specifications:

Name:	Anti-DLC1 Antibody
Description:	Goat polyclonal antibody to DLC1.
Applications:	ELISA, IF, IHC
Reactivity:	Human
Immunogen:	Synthetic peptide corresponding to Human DLC1 (N terminal).
Sequence:	SVAIRKRSWEEHC
Host:	Goat
Clonality:	Polyclonal
Isotype:	IgG
Conjugate:	Unconjugated
Purification:	Purified from goat serum by ammonium sulphate precipitation followed by antigen affinity chromatography using the immunizing peptide.
Concentration:	100 µg at 0.5 mg/ml.
Product Form:	Liquid
Formulation:	Supplied in Tris Buffered Saline, pH 7.30, with 0.02% Sodium Azide and 0.5% BSA.
Storage:	Shipped at 4°C. Upon delivery aliquot and store at -20°C. Avoid freeze / thaw cycles.
Disclaimer:	This product is for research use only. It is not intended for diagnostic or therapeutic use.

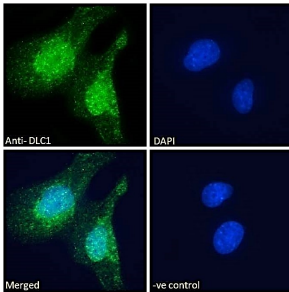
### Images:



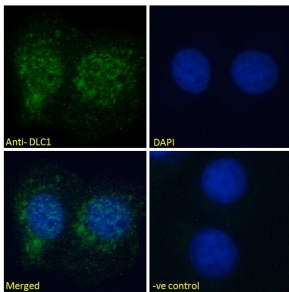
Anti-DLC1 Antibody (A83189) (5µg/ml) staining of paraffin embedded Human Adrenal Gland. Steamed antigen retrieval with citrate buffer pH 6, AP-staining.

## Anti-DLC1 Antibody (A83189)

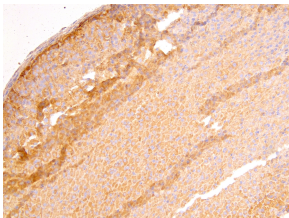
Images continued:



Anti-DLC1 Antibody (A83189) - Immunofluorescence analysis of paraformaldehyde fixed U251 cells, permeabilized with 0.15% Triton. Primary incubation 1hr (10 $\mu$ g/ml) followed by Alexa Fluor 488 secondary antibody (2 $\mu$ g/ml), showing nuclear and vesicle staining.



Anti-DLC1 Antibody (A83189) - Immunofluorescence analysis of paraformaldehyde fixed U2OS cells, permeabilized with 0.15% Triton. Primary incubation 1hr (10 $\mu$ g/ml) followed by Alexa Fluor 488 secondary antibody (2 $\mu$ g/ml), showing nuclear and cytoplasmic staining.



Anti-DLC1 Antibody (A83189) (4 $\mu$ g/ml) staining of paraffin embedded Mouse Adrenal Gland. Heat induced antigen retrieval with citrate buffer pH 6, HRP-staining.