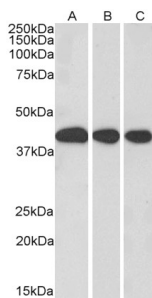


Anti-MORF4L1 Antibody (A83235)

Specifications:

Name:	Anti-MORF4L1 Antibody
Description:	Goat polyclonal antibody to MORF4L1.
Applications:	ELISA, WB
Reactivity:	Human, Mouse, Rat, Porcine
Immunogen:	Synthetic peptide corresponding to Human MORF4L1 (N terminal).
Sequence:	APKQDPKPKFQEG-C
Host:	Goat
Clonality:	Polyclonal
Isotype:	IgG
Conjugate:	Unconjugated
Purification:	Purified from goat serum by ammonium sulphate precipitation followed by antigen affinity chromatography using the immunizing peptide.
Concentration:	100 µg at 0.5 mg/ml.
Product Form:	Liquid
Formulation:	Supplied in Tris Buffered Saline, pH 7.30, with 0.02% Sodium Azide and 0.5% BSA.
Storage:	Shipped at 4°C. Upon delivery aliquot and store at -20°C. Avoid freeze / thaw cycles.
Disclaimer:	This product is for research use only. It is not intended for diagnostic or therapeutic use.

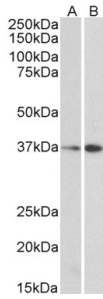
Images:



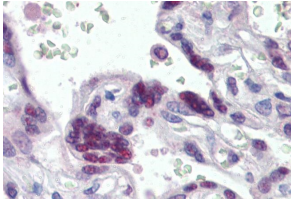
Anti-MORF4L1 Antibody (A83235) (0.3µg/ml) staining of Mouse Liver (A), Rat Liver (B) and Pig Liver (C) lysate (35µg protein in RIPA buffer). Primary incubation was 1 hour. Detected by chemiluminescence

Anti-MORF4L1 Antibody (A83235)

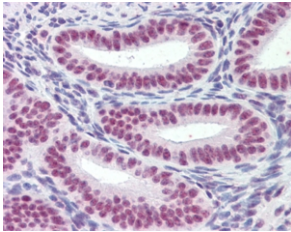
Images continued:



Anti-MORF4L1 Antibody (A83235) (0.3 μ g/ml) staining of NIH3T3 (A) and HepG2 (B) lysate (35 μ g protein in RIPA buffer). Primary incubation was 1 hour. Detected by chemiluminescence



Anti-MORF4L1 Antibody (A83235) (2.5 μ g/ml) staining of paraffin embedded Human Placenta. Steamed antigen retrieval with citrate buffer pH 6, AP-staining.



Anti-MORF4L1 Antibody (A83235) (2.5 μ g/ml) staining of paraffin embedded Human Uterus. Steamed antigen retrieval with citrate buffer pH 6, AP-staining.