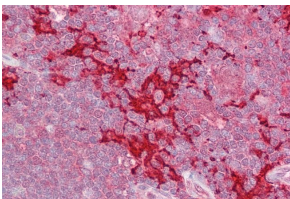


Anti-MAP4K1 Antibody (A83250)

Specifications:

| | |
|----------------|---|
| Name: | Anti-MAP4K1 Antibody |
| Description: | Goat polyclonal antibody to MAP4K1. |
| Applications: | ELISA, WB, IHC |
| Reactivity: | Human |
| Immunogen: | Synthetic peptide corresponding to Human MAP4K1 (N terminal). |
| Sequence: | DVVDPDIFNRDPR-C |
| Host: | Goat |
| Clonality: | Polyclonal |
| Isotype: | IgG |
| Conjugate: | Unconjugated |
| Purification: | Purified from goat serum by ammonium sulphate precipitation followed by antigen affinity chromatography using the immunizing peptide. |
| Concentration: | 100 µg at 0.5 mg/ml. |
| Product Form: | Liquid |
| Formulation: | Supplied in Tris Buffered Saline, pH 7.30, with 0.02% Sodium Azide and 0.5% BSA. |
| Storage: | Shipped at 4°C. Upon delivery aliquot and store at -20°C. Avoid freeze / thaw cycles. |
| Disclaimer: | This product is for research use only. It is not intended for diagnostic or therapeutic use. |

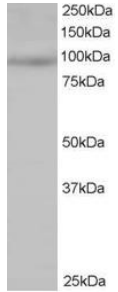
Images:



Anti-MAP4K1 Antibody (A83250) (2.5µg/ml) staining of paraffin embedded Human Thymus. Steamed antigen retrieval with citrate buffer pH 6, AP-staining.

Anti-MAP4K1 Antibody (A83250)

Images continued:



Anti-MAP4K1 Antibody (A83250) staining (0.5 μ g/ml) of Jurkat lysate (RIPA buffer, 35 μ g total protein per lane). Primary incubated for 1 hour. Detected by chemiluminescence.