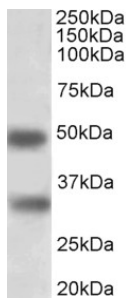


Anti-GEM Antibody (A83593)

Specifications:

Name:	Anti-GEM Antibody
Description:	Goat polyclonal antibody to GEM.
Applications:	ELISA, WB
Reactivity:	Human
Immunogen:	Synthetic peptide corresponding to Human GEM (internal region).
Sequence:	C-QKEPHQYSHRNRH
Host:	Goat
Clonality:	Polyclonal
Isotype:	IgG
Conjugate:	Unconjugated
Purification:	Purified from goat serum by ammonium sulphate precipitation followed by antigen affinity chromatography using the immunizing peptide.
Concentration:	100 µg at 0.5 mg/ml.
Product Form:	Liquid
Formulation:	Supplied in Tris Buffered Saline, pH 7.30, with 0.02% Sodium Azide and 0.5% BSA.
Storage:	Shipped at 4°C. Upon delivery aliquot and store at -20°C. Avoid freeze / thaw cycles.
Disclaimer:	This product is for research use only. It is not intended for diagnostic or therapeutic use.

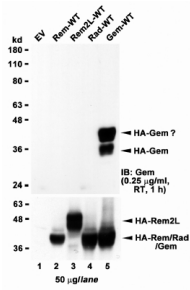
Images:



Anti-GEM Antibody (A83593) (1µg/ml) staining of Human Spleen lysate (35µg protein in RIPA buffer). Primary incubation was 1 hour. Detected by chemiluminescence.

Anti-GEM Antibody (A83593)

Images continued:



HEK293 lysate overexpressing full-length Human GEM (HA tagged), mock-transfected HEK293 (EV) and HEK293 transiently expressing GEM-related genes (Rem, Rem2L and Rad) probed with Anti-GEM Antibody (A83593) (1 µg/ml). The same lysates probed with anti-HA tag antibody in the lower panel.