

Anti-VPS35 Antibody (A83699)

Specifications:

Name:	Anti-VPS35 Antibody
Description:	Goat polyclonal antibody to VPS35.
Applications:	ELISA, WB, IHC
Reactivity:	Human, Rat
Immunogen:	Synthetic peptide corresponding to Human VPS35 (C terminal).
Sequence:	C-SPESEGPIYEGLLI
Host:	Goat
Clonality:	Polyclonal
Isotype:	IgG
Conjugate:	Unconjugated
Purification:	Purified from goat serum by ammonium sulphate precipitation followed by antigen affinity chromatography using the immunizing peptide.
Concentration:	100 µg at 0.5 mg/ml.
Product Form:	Liquid
Formulation:	Supplied in Tris Buffered Saline, pH 7.30, with 0.02% Sodium Azide and 0.5% BSA.
Storage:	Shipped at 4°C. Upon delivery aliquot and store at -20°C. Avoid freeze / thaw cycles.
Disclaimer:	This product is for research use only. It is not intended for diagnostic or therapeutic use.

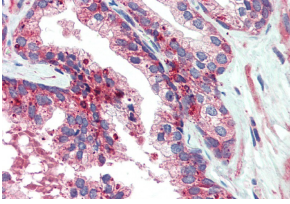
Images:



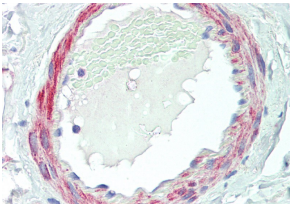
Anti-VPS35 Antibody (A83699) (1 µg/ml) staining of Human Cerebellum (A) and Mouse Brain (B) lysates (35 µg protein in RIPA buffer). Detected by chemiluminescence.

Anti-VPS35 Antibody (A83699)

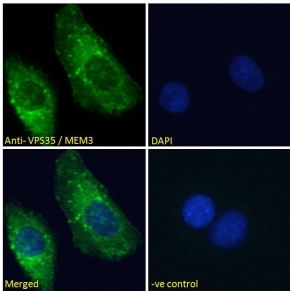
Images continued:



Anti-VPS35 Antibody (A83699) (5 μ g/ml) staining of paraffin embedded Human Prostate. Steamed antigen retrieval with citrate buffer pH 6, AP-staining.



Anti-VPS35 Antibody (A83699) (5 μ g/ml) staining of paraffin embedded Human Small Intestine. Steamed antigen retrieval with citrate buffer pH 6, AP-staining.



Anti-VPS35 Antibody (A83699) - Immunofluorescence analysis of paraformaldehyde fixed U2OS cells, permeabilized with 0.15% Triton. Primary incubation 1hr (10 μ g/ml) followed by Alexa Fluor 488 secondary antibody (2 μ g/ml), showing cytoplasmic staining.