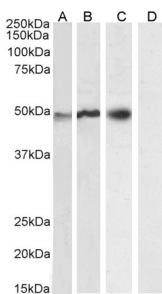


## Anti-NCF1 Antibody (A83765)

### Specifications:

Name:	Anti-NCF1 Antibody
Description:	Goat polyclonal antibody to NCF1.
Applications:	ELISA, WB, IHC, IF, FC
Reactivity:	Human, Mouse, Porcine
Immunogen:	Synthetic peptide corresponding to Human NCF1 (C terminal).
Sequence:	C-SESTKRKLASAV
Host:	Goat
Clonality:	Polyclonal
Isotype:	IgG
Conjugate:	Unconjugated
Purification:	Purified from goat serum by ammonium sulphate precipitation followed by antigen affinity chromatography using the immunizing peptide.
Concentration:	100 µg at 0.5 mg/ml.
Product Form:	Liquid
Formulation:	Supplied in Tris Buffered Saline, pH 7.30, with 0.02% Sodium Azide and 0.5% BSA.
Storage:	Shipped at 4°C. Upon delivery aliquot and store at -20°C. Avoid freeze / thaw cycles.
Disclaimer:	This product is for research use only. It is not intended for diagnostic or therapeutic use.

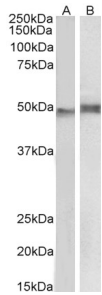
### Images:



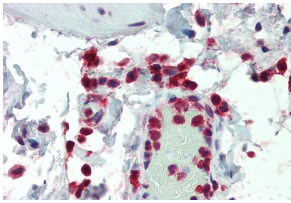
Anti-NCF1 Antibody (A83765) (0.2µg/ml) staining of U937 (A), (0.01µg/ml) Daudi (B), (0.3µg/ml) U251 (C) and negative control A431 (D) cell lysate (35µg protein in RIPA buffer). Detected by chemiluminescence.

## Anti-NCF1 Antibody (A83765)

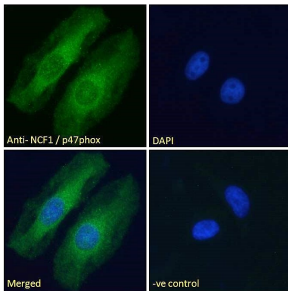
Images continued:



Anti-NCF1 Antibody (A83765) (1 $\mu$ g/ml) staining of Mouse Thymus (A) and Pig Spleen (B) lysate (35 $\mu$ g protein in RIPA buffer). Detected by chemiluminescence.



Anti-NCF1 Antibody (A83765) (5 $\mu$ g/ml) staining of paraffin embedded Human Colon. Steamed antigen retrieval with citrate buffer pH 6, AP-staining.



Anti-NCF1 Antibody (A83765) - Immunofluorescence analysis of paraformaldehyde fixed HeLa cells, permeabilized with 0.15% Triton. Primary incubation 1hr (10 $\mu$ g/ml) followed by Alexa Fluor 488 secondary antibody (2 $\mu$ g/ml), showing cytoplasmic staining.