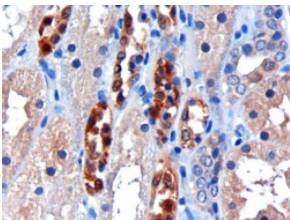


## Anti-CBR1 Antibody (A83856)

### Specifications:

Name:	Anti-CBR1 Antibody
Description:	Goat polyclonal antibody to CBR1.
Applications:	ELISA, WB, IHC
Reactivity:	Human
Immunogen:	Synthetic peptide corresponding to Human CBR1 (C terminal).
Sequence:	C-HGQFVSEKRVEQW
Host:	Goat
Clonality:	Polyclonal
Isotype:	IgG
Conjugate:	Unconjugated
Purification:	Purified from goat serum by ammonium sulphate precipitation followed by antigen affinity chromatography using the immunizing peptide.
Concentration:	100 µg at 0.5 mg/ml.
Product Form:	Liquid
Formulation:	Supplied in Tris Buffered Saline, pH 7.30, with 0.02% Sodium Azide and 0.5% BSA.
Storage:	Shipped at 4°C. Upon delivery aliquot and store at -20°C. Avoid freeze / thaw cycles.
Disclaimer:	This product is for research use only. It is not intended for diagnostic or therapeutic use.

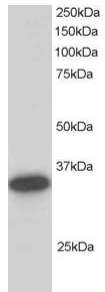
### Images:



Anti-CBR1 Antibody (A83856) (3µg/ml) staining of paraffin embedded Human Kidney. Microwaved antigen retrieval with citrate buffer pH 6, HRP-staining.

## Anti-CBR1 Antibody (A83856)

Images continued:



Anti-CBR1 Antibody (A83856) staining (0.2 $\mu$ g/ml) of Human Liver lysate (RIPA buffer, 30 $\mu$ g total protein per lane). Primary incubated for 1 hour. Detected by western blot using chemiluminescence.