

Anti-Centaurin beta 2 Antibody (A83973)

Specifications:

| | |
|----------------|---|
| Name: | Anti-Centaurin beta 2 Antibody |
| Description: | Goat polyclonal antibody to Centaurin beta 2. |
| Applications: | ELISA, WB, IHC |
| Reactivity: | Human, Mouse, Rat |
| Immunogen: | Synthetic peptide corresponding to Human ACAP2 (C terminal). |
| Sequence: | C-EKLNRFQQDSQKF |
| Host: | Goat |
| Clonality: | Polyclonal |
| Isotype: | IgG |
| Conjugate: | Unconjugated |
| Purification: | Purified from goat serum by ammonium sulphate precipitation followed by antigen affinity chromatography using the immunizing peptide. |
| Concentration: | 100 µg at 0.5 mg/ml. |
| Product Form: | Liquid |
| Formulation: | Supplied in Tris Buffered Saline, pH 7.30, with 0.02% Sodium Azide and 0.5% BSA. |
| Storage: | Shipped at 4°C. Upon delivery aliquot and store at -20°C. Avoid freeze / thaw cycles. |
| Disclaimer: | This product is for research use only. It is not intended for diagnostic or therapeutic use. |

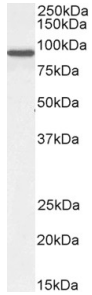
Images:



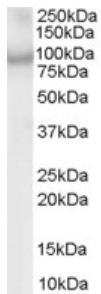
Anti-ACAP2 Antibody (A83973) (0.3µg/ml) staining of Mouse (A) and Rat (B) Lung lysate (35µg protein in RIPA buffer). Primary incubation was 1 hour. Detected by chemiluminescence.

Anti-Centaurin beta 2 Antibody (A83973)

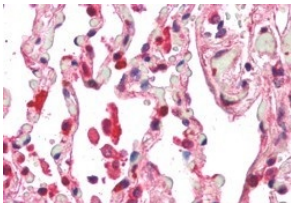
Images continued:



Anti-ACAP2 Antibody (A83973) (0.3 μ g/ml) staining of NIH3T3 cell lysate (35 μ g protein in RIPA buffer). Primary incubation was 1 hour. Detected by chemiluminescence.



Anti-ACAP2 Antibody (A83973) (1 μ g/ml) staining of MOLT4 lysate (35 μ g protein in RIPA buffer). Primary incubation was 1 hour. Detected by chemiluminescence.



Anti-ACAP2 Antibody (A83973) (5 μ g/ml) staining of paraffin embedded Human Lung. Steamed antigen retrieval with citrate buffer pH 6, AP-staining.