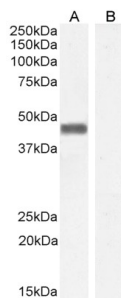


## Anti-PLEK Antibody (A83983)

### Specifications:

Name:	Anti-PLEK Antibody
Description:	Goat polyclonal antibody to PLEK.
Applications:	ELISA, WB
Reactivity:	Human
Immunogen:	Synthetic peptide corresponding to Human PLEK (C terminal).
Sequence:	C-EWIKAIQMASRTGK
Host:	Goat
Clonality:	Polyclonal
Isotype:	IgG
Conjugate:	Unconjugated
Purification:	Purified from goat serum by ammonium sulphate precipitation followed by antigen affinity chromatography using the immunizing peptide.
Concentration:	100 µg at 0.5 mg/ml.
Product Form:	Liquid
Formulation:	Supplied in Tris Buffered Saline, pH 7.30, with 0.02% Sodium Azide and 0.5% BSA.
Storage:	Shipped at 4°C. Upon delivery aliquot and store at -20°C. Avoid freeze / thaw cycles.
Disclaimer:	This product is for research use only. It is not intended for diagnostic or therapeutic use.

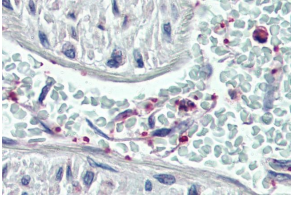
### Images:



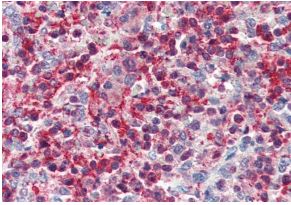
Anti-PLEK Antibody (A83983) staining (0.01µg/ml) of Human Parathyroid lysate (A) and negative control HepG2 (B) cell lysate (35µg protein in RIPA buffer). Detected by chemiluminescence.

## Anti-PLEK Antibody (A83983)

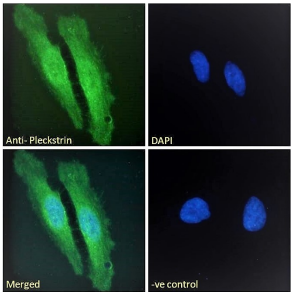
Images continued:



Anti-PLEK Antibody (A83983) (3.75 $\mu$ g/ml) staining of paraffin embedded Human Vessel (platelets). Steamed antigen retrieval with citrate buffer pH 6, AP-staining.



Anti-PLEK Antibody (A83983) (3.75 $\mu$ g/ml) staining of paraffin embedded Human Spleen. Steamed antigen retrieval with citrate buffer pH 6, AP-staining.



Anti-PLEK Antibody (A83983) Immunofluorescence analysis of paraformaldehyde fixed HeLa cells, permeabilized with 0.15% Triton. Primary incubation 1hr (10 $\mu$ g/ml) followed by Alexa Fluor 488 secondary antibody (2 $\mu$ g/ml), showing cytoplasmic/membrane and nuclear staining.