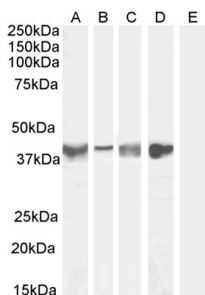


Anti-ASPEN Antibody (A84069)

Specifications:

Name:	Anti-ASPEN Antibody
Description:	Goat polyclonal antibody to ASPEN.
Applications:	ELISA, WB, IF
Reactivity:	Human, Mouse, Rat
Immunogen:	Synthetic peptide corresponding to Human ASPEN (internal region).
Sequence:	C-IHENKVKKIQKDT
Host:	Goat
Clonality:	Polyclonal
Isotype:	IgG
Conjugate:	Unconjugated
Purification:	Purified from goat serum by ammonium sulphate precipitation followed by antigen affinity chromatography using the immunizing peptide.
Concentration:	100 µg at 0.5 mg/ml.
Product Form:	Liquid
Formulation:	Supplied in Tris Buffered Saline, pH 7.30, with 0.02% Sodium Azide and 0.5% BSA.
Storage:	Shipped at 4°C. Upon delivery aliquot and store at -20°C. Avoid freeze / thaw cycles.
Disclaimer:	This product is for research use only. It is not intended for diagnostic or therapeutic use.

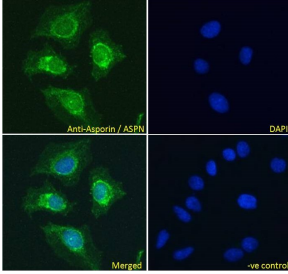
Images:



Anti-ASPEN Antibody (A84069) (0.1µg/ml) staining of Human Tonsil (A), (0.3µg/ml) Human Uterus (B), Mouse Skeletal Muscle (C) (1µg/ml) Rat Skeletal Muscle (D) and negative control Human Cerebellum (E) lysate (35µg protein in RIPA buffer). Detected by chemiluminescence.

Anti-ASPEN Antibody (A84069)

Images continued:



Anti-ASPEN Antibody (A84069) Immunofluorescence analysis of paraformaldehyde fixed HeLa cells, permeabilized with 0.15% Triton. Primary incubation 1hr (10 μ g/ml) followed by Alexa Fluor 488 secondary antibody (4 μ g/ml), showing nuclear membrane staining. The nuclear stain is DAPI (blue). Negative control: Unimmunized goat IgG (10 μ g/ml) followed by Alexa Fluor 488 secondary antibody (4 μ g/ml).