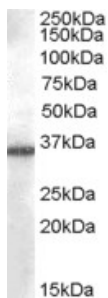


## Anti-AKR1B10 Antibody (A84467)

### Specifications:

Name:	Anti-AKR1B10 Antibody
Description:	Goat polyclonal antibody to AKR1B10 .
Applications:	ELISA, WB
Reactivity:	Human
Immunogen:	Synthetic peptide corresponding to Human AKR1B10 (C terminal).
Sequence:	C-QSSHLEDYPFDAE
Host:	Goat
Clonality:	Polyclonal
Isotype:	IgG
Conjugate:	Unconjugated
Purification:	Purified from goat serum by ammonium sulphate precipitation followed by antigen affinity chromatography using the immunizing peptide.
Concentration:	100 µg at 0.5 mg/ml.
Product Form:	Liquid
Formulation:	Supplied in Tris Buffered Saline, pH 7.30, with 0.02% Sodium Azide and 0.5% BSA.
Storage:	Shipped at 4°C. Upon delivery aliquot and store at -20°C. Avoid freeze / thaw cycles.
Disclaimer:	This product is for research use only. It is not intended for diagnostic or therapeutic use.

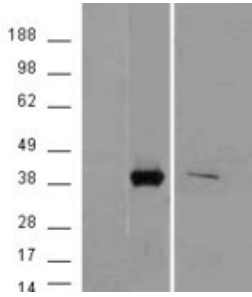
### Images:



Anti-AKR1B10 Antibody (A84467) (0.03µg/ml) staining of A549 cell lysate (35µg protein in RIPA buffer). Primary incubation was 1 hour. Detected by chemiluminescence.

## Anti-AKR1B10 Antibody (A84467)

Images continued:



HEK293 overexpressing AKR1B10 (RC203177) with C-terminal tag (DYKDDDDK) and probed with anti-DYKDDDDK in the left panel and with Anti-AKR1B10 Antibody (A84467) in the right panel (mock transfection in first and last lanes), tested by Origene.