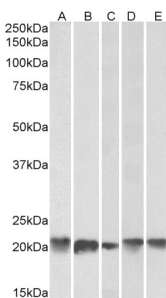


Anti-Ferritin Light Chain Antibody (A84622)

Specifications:

Name:	Anti-Ferritin Light Chain Antibody
Description:	Goat polyclonal antibody to Ferritin Light Chain.
Applications:	ELISA, WB
Reactivity:	Human, Mouse, Rat
Immunogen:	Synthetic peptide corresponding to Human FTL (C terminal).
Sequence:	C-GEYLFERLTLKHD
Host:	Goat
Clonality:	Polyclonal
Isotype:	IgG
Conjugate:	Unconjugated
Purification:	Purified from goat serum by ammonium sulphate precipitation followed by antigen affinity chromatography using the immunizing peptide.
Concentration:	100 µg at 0.5 mg/ml.
Product Form:	Liquid
Formulation:	Supplied in Tris Buffered Saline, pH 7.30, with 0.02% Sodium Azide and 0.5% BSA.
Storage:	Shipped at 4°C. Upon delivery aliquot and store at -20°C. Avoid freeze / thaw cycles.
Disclaimer:	This product is for research use only. It is not intended for diagnostic or therapeutic use.

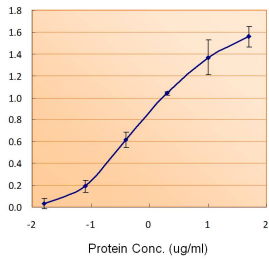
Images:



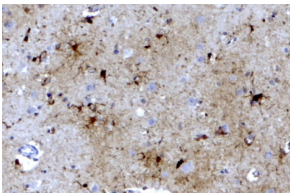
Anti-FTL Antibody (A84622) (0.1 µg/ml) staining of Human Cerebellum (A), Liver (B), Placenta (C), Mouse Brain (D) and Rat Brain (E) lysates (35 µg protein in RIPA buffer). Primary incubation was 1 hour. Detected by chemiluminescence.

Anti-Ferritin Light Chain Antibody (A84622)

Images continued:



Anti-FTL Antibody (A84622) (1.5 μ g/ml) as the reporter with the capture rabbit antibody (5 μ g/ml).



Anti-FTL Antibody (A84622) (3.8 μ g/ml) staining of paraffin embedded Human Brain Cortex. Steamed antigen retrieval with citrate buffer pH 6, HRP-staining.