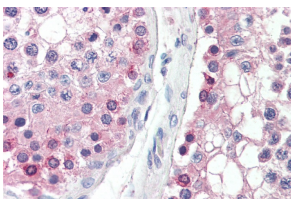


Anti-DYDC1 Antibody (A84763)

Specifications:

Name:	Anti-DYDC1 Antibody
Description:	Goat polyclonal antibody to DYDC1.
Applications:	ELISA, WB, IHC
Reactivity:	Human, Mouse, Rat
Immunogen:	Synthetic peptide corresponding to Human DYDC1 (internal region).
Sequence:	C-TLAEISDRYGAPN
Host:	Goat
Clonality:	Polyclonal
Isotype:	IgG
Conjugate:	Unconjugated
Purification:	Purified from goat serum by ammonium sulphate precipitation followed by antigen affinity chromatography using the immunizing peptide.
Concentration:	100 µg at 0.5 mg/ml.
Product Form:	Liquid
Formulation:	Supplied in Tris Buffered Saline, pH 7.30, with 0.02% Sodium Azide and 0.5% BSA.
Storage:	Shipped at 4°C. Upon delivery aliquot and store at -20°C. Avoid freeze / thaw cycles.
Disclaimer:	This product is for research use only. It is not intended for diagnostic or therapeutic use.

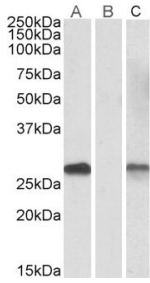
Images:



Anti-DYDC1 Antibody (A84763) (5µg/ml) staining of paraffin embedded Human Testis. Steamed antigen retrieval with citrate buffer pH 6, AP-staining.

Anti-DYDC1 Antibody (A84763)

Images continued:



Lane A - Anti-DYDC1 Antibody (A84763) (1µg/ml) staining of HEK293 overexpressing Human DYDC1 lysate (10µg protein in RIPA buffer) Lane B - Anti-DYDC1 Antibody (A84763) (0.1µg/ml) staining of HEK293 mock-transfected lysate (10µg protein in RIPA buffer). Lane C - Anti-MYC Tag (1/1000) staining HEK293 overexpressing Human DYDC1 lysate (10µg protein in RIPA buffer). Primary incubations were for 1 hour. Detected by chemiluminescence.