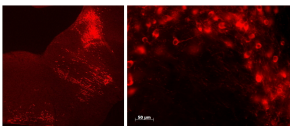


Anti-TPH2 Antibody (A84980)

Specifications:

Name:	Anti-TPH2 Antibody
Description:	Goat polyclonal antibody to TPH2.
Applications:	ELISA, IHC
Reactivity:	Mouse
Immunogen:	Synthetic peptide corresponding to Mouse Tph2 (internal region).
Sequence:	C-SLTQNKAIKSEDK
Host:	Goat
Clonality:	Polyclonal
Isotype:	IgG
Conjugate:	Unconjugated
Purification:	Purified from goat serum by ammonium sulphate precipitation followed by antigen affinity chromatography using the immunizing peptide.
Concentration:	100 µg at 0.5 mg/ml.
Product Form:	Liquid
Formulation:	Supplied in Tris Buffered Saline, pH 7.30, with 0.02% Sodium Azide and 0.5% BSA.
Storage:	Shipped at 4°C. Upon delivery aliquot and store at -20°C. Avoid freeze / thaw cycles.
Disclaimer:	This product is for research use only. It is not intended for diagnostic or therapeutic use.

Images:



Anti-Tph2 Antibody (A84980) (0.5µg/ml) staining of paraffin embedded Mouse Brain stem in sagittal (left) and coronal (right) sections of Raphe nuclei. Detection Alexa 594.