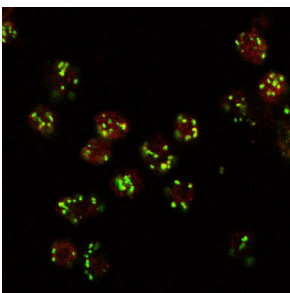


## Anti-LVA Antibody (A85031)

### Specifications:

Name:	Anti-LVA Antibody
Description:	Goat polyclonal antibody to LVA.
Applications:	ELISA, ICC, IF
Reactivity:	Drosophila
Immunogen:	Synthetic peptide corresponding to Human LVA (internal region).
Sequence:	C-HTDAQVSAELAKQ
Host:	Goat
Clonality:	Polyclonal
Isotype:	IgG
Conjugate:	Unconjugated
Purification:	Purified from goat serum by ammonium sulphate precipitation followed by antigen affinity chromatography using the immunizing peptide.
Concentration:	100 µg at 0.5 mg/ml.
Product Form:	Liquid
Formulation:	Supplied in Tris Buffered Saline, pH 7.30, with 0.02% Sodium Azide and 0.5% BSA.
Storage:	Shipped at 4°C. Upon delivery aliquot and store at -20°C. Avoid freeze / thaw cycles.
Disclaimer:	This product is for research use only. It is not intended for diagnostic or therapeutic use.

### Images:



Anti-LVA Antibody (A85031) (10µg/ml) staining (red, AlexaFluor 555) of Drosophila S2 cells, co-stained with MG130 rabbit antibody (green, AlexaFluor 488). The yellow spots indicate co-localization of the two proteins.