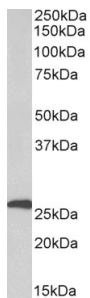


## Anti-Factor D Antibody (A85223)

### Specifications:

Name:	Anti-Factor D Antibody
Description:	Goat polyclonal antibody to Factor D.
Applications:	ELISA, WB
Reactivity:	Human
Immunogen:	Synthetic peptide corresponding to Human CFD (internal region).
Sequence:	C-NRRTHHDGAITER
Host:	Goat
Clonality:	Polyclonal
Isotype:	IgG
Conjugate:	Unconjugated
Purification:	Purified from goat serum by ammonium sulphate precipitation followed by antigen affinity chromatography using the immunizing peptide.
Concentration:	100 µg at 0.5 mg/ml.
Product Form:	Liquid
Formulation:	Supplied in Tris Buffered Saline, pH 7.30, with 0.02% Sodium Azide and 0.5% BSA.
Storage:	Shipped at 4°C. Upon delivery aliquot and store at -20°C. Avoid freeze / thaw cycles.
Disclaimer:	This product is for research use only. It is not intended for diagnostic or therapeutic use.

### Images:



Anti-CFD Antibody (A85223) (1µg/ml) staining of Human Adipose lysate (35µg protein in RIPA buffer). Primary incubation was 1 hour. Detected by chemiluminescence.