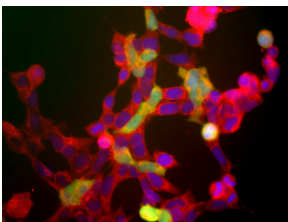


Anti-NSE Antibody (A85285)

Specifications:

Name:	Anti-NSE Antibody
Description:	Rabbit polyclonal antibody to NSE.
Applications:	WB, ICC/IF, IHC
Recommended Dilutions:	WB: 1:2,000, ICC/IF: 1:500
Reactivity:	Human, Rat, Mouse
Immunogen:	Recombinant full-length human NSE, expressed in and purified from E. coli.
Host:	Rabbit
Clonality:	Polyclonal
Isotype:	IgG
Conjugate:	Unconjugated
Molecular Weight:	47 kDa
Purity:	Whole antiserum.
Product Form:	Liquid
Formulation:	Supplied as an aliquot of serum with 5mM Sodium Azide.
Storage:	Shipped at 4°C. Upon delivery aliquot and store at -20°C. Avoid freeze / thaw cycles.
Disclaimer:	This product is for research use only. It is not intended for diagnostic or therapeutic use.

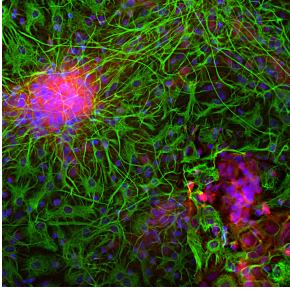
Images:



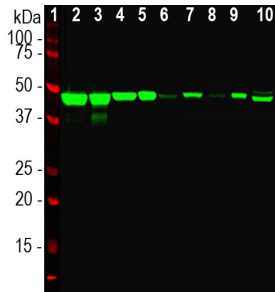
HEK 293 cells stained with Anti-NSE Antibody and Anti-Ubiquitin (A85350). The red channel shows staining with Anti-NSE Antibody which recognizes all of these cells. The green channels shows staining for Anti-Ubiquitin Antibody. This neuronal gene is apparently activated in a cell density dependent fashion and at this stage only a few cells express this protein. However, all cells that express NSE also express UCHL1.

Anti-NSE Antibody (A85285)

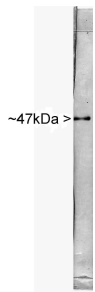
Images continued:



Immunofluorescent analysis of mixed cortical neuron-glia cell culture from E20 rat stained with Anti-NSE Antibody (A85285), at a dilution of 1:500, in red, and co-stained with Anti-GFAP Antibody (A85307), at a dilution of 1:5,000 in green. The nuclear DNA is visualised in blue using Hoechst staining. The Anti-NSE Antibody (A85285) labels protein expressed in neuronal cells, while the Anti-GFAP Antibody (A85307) stains intermediate filaments in astrocytic and certain other glial cells.



Western blot analysis of different tissue and cell lysates using Anti-NSE Antibody (A85285), at a dilution of 1:5,000, in green. The lanes contain samples of: [1] Protein standards, in red, [2] rat brain, [3] rat spinal cord, [4] mouse brain, [5] mouse spinal cord, [6] NIH-3T3 cells, [7] HEK293 cells, [8] HeLa cells, [9] SH-SY5Y cells, and [10] C6 cells. A single band at about 47 kDa corresponds to the NSE protein, seen only in extracts containing neurons or neuronal lineage cells.



Blot of rat spinal cord probed with Anti-NSE Antibody. The antibody stains a single sharp band corresponding to NSE at ~47 kDa.