

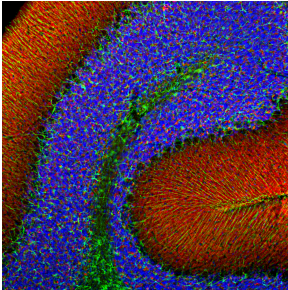
Anti-alpha Synuclein Antibody [2A7] (A85290)

Specifications:

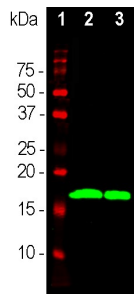
Name:	Anti-alpha Synuclein Antibody [2A7]
Description:	Mouse monoclonal (2A7) antibody to alpha Synuclein.
Specificity:	This antibody specifically recognizes alpha Synuclein and also binds human alpha Synuclein containing either the A30P or the A53T Parkinson's associated mutations. This antibody does not cross-react with beta Synuclein or gamma Synuclein. The epitope is in the region 61-95; which corresponds to the "Non-amyloid beta component of Alzheimer's disease amyloid".
Applications:	WB, ICC/IF, IHC
Recommended Dilutions:	WB: 1:1,000, ICC/IF: 1:1,000
Reactivity:	Human, Bovine, Porcine, Rat, Mouse
Immunogen:	Recombinant full-length human alpha Synuclein, expressed in and purified from E. coli.
Host:	Mouse
Clonality:	Monoclonal
Clone ID:	2A7
Isotype:	IgG1
Conjugate:	Unconjugated
Purification:	Immunogen affinity purification.
Concentration:	1 mg/ml
Molecular Weight:	~15 kDa
Product Form:	Liquid
Formulation:	Supplied in Phosphate Buffered Saline with 50% Glycerol and 5mM Sodium Azide.
Storage:	Shipped at 4°C. Upon delivery aliquot and store at -20°C. Avoid freeze / thaw cycles.
Disclaimer:	This product is for research use only. It is not intended for diagnostic or therapeutic use.

Anti-alpha Synuclein Antibody [2A7] (A85290)

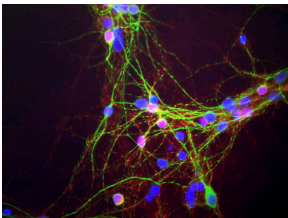
Images:



Immunofluorescent analysis of rat cerebellum section co-stained with Anti-a-Synuclein Antibody (1:1,000 | red) and Anti-GFAP Antibody (A85419 | 1:5,000 | green). The blue is DAPI staining of nuclear DNA. Following transcardial perfusion of rat with 4% paraformaldehyde, brain was post fixed for 24 hours, cut to 45 μ M, and free-floating sections were stained with the above antibodies. The a-synuclein protein is concentrated in synaptic regions, while the Anti-GFAP Antibody stains the filamentous cytoskeleton of Bergmann glia and astrocytic cells.



Western blot analysis of tissue lysates using Anti-a-Synuclein Antibody (1:1,000 | green): [1] protein standard in red, [2] whole rat brain lysate, [3] rat spinal cord lysate. Strong band at about 15kDa corresponds to a-synuclein protein.



Mixed neuron-glia cultures stained with Anti-a-Synuclein Antibody (red) and Anti-MAP2 Antibody (A85363 | green). The Anti-a-Synuclein Antibody stains vesicular structures - the perikarya and processes of the neurons in this image. Note that some of the neuronal perikarya contain much more alpha-synuclein than others. The blue channel shows the localization of DNA.



Blots of Anti-a-Synuclein Antibody on recombinant alpha-synuclein (left lane) and crude extract of mouse brain (right lane).