

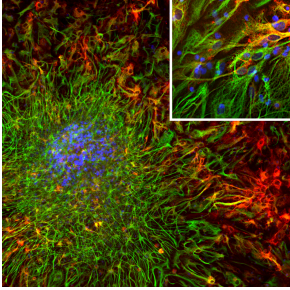
Anti-ALDH1L1 Antibody [2E7] (A85314)

Specifications:

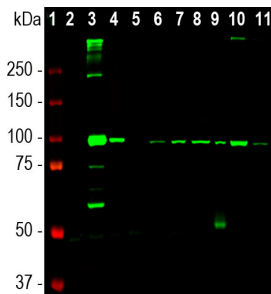
Name:	Anti-ALDH1L1 Antibody [2E7]
Description:	Mouse monoclonal [2E7] antibody to ALDH1L1.
Applications:	WB, ICC/IF, IHC
Recommended Dilutions:	WB: 1:5,000-1:10,000, ICC/IF: 1:1,000, IHC: 1:1,000
Reactivity:	Human, Rat, Mouse
Immunogen:	Recombinant construct corresponding to amino acids 402-902 of human ALDH1L1 protein, expressed in and purified from E. coli.
Host:	Mouse
Clonality:	Monoclonal
Clone ID:	2E7
Isotype:	IgG1
Conjugate:	Unconjugated
Purification:	Immunogen affinity purification.
Concentration:	1 mg/ml
Molecular Weight:	100 kDa
Product Form:	Liquid
Formulation:	Supplied in Phosphate Buffered Saline with 50% Glycerol and 5mM Sodium Azide.
Storage:	Shipped at 4°C. Upon delivery aliquot and store at -20°C. Avoid freeze / thaw cycles.
Disclaimer:	This product is for research use only. It is not intended for diagnostic or therapeutic use.

Anti-ALDH1L1 Antibody [2E7] (A85314)

Images:



Immunofluorescent analysis of cortical neuron-glia cell culture from E20 rat stained with Anti-ALDH1L1 Antibody [2E7] (A85314), dilution 1:1,000, in red, and co-stained with Anti-GFAP Antibody (A85307), dilution 1:5,000 in green. The blue is Hoechst staining of nuclear DNA. The Anti-ALDH1L1 Antibody [2E7] produces cytoplasmic staining of glial cells, while the Anti-GFAP Antibody labels the intermediate filament cytoskeleton in astrocytes and other glial cells. Some astrocytic cells express both ALDH1L1 and GFAP and therefore appear yellow.



Western blot analysis of different tissue and cell lysates using Anti-ALDH1L1 Antibody [2E7] (A85314), dilution 1:5,000, in green. The lanes contain: [1] protein standard (red), rat tissue lysates: [2] heart, [3] liver, [4] kidney, [5] lung, [6] brain, and [7] spinal cord; mouse tissue lysates: [8] brain, and [9] spinal cord; cell lysates: [10] NIH-3T3, and [11] HEK293. The band at 100kDa mark corresponds to ALDH1L1 protein.