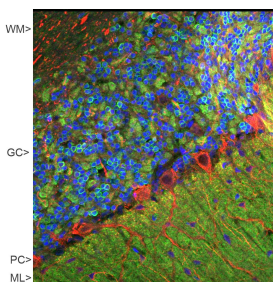


Anti-Visinin Like Protein 1 Antibody (A85344)

Specifications:

Name:	Anti-Visinin Like Protein 1 Antibody
Description:	Chicken polyclonal antibody to Visinin Like 1 Protein 1.
Applications:	WB, ICC/IF, IHC
Recommended Dilutions:	WB: 1:5,000-1:10,000, ICC/IF: 1:1,000-1:2,000, IHC: 1:1,000-1:2,000
Reactivity:	Human, Rat, Mouse, Bovine, Porcine
Immunogen:	Recombinant full-length human VLP1, expressed in and purified from E. coli.
Host:	Chicken
Clonality:	Polyclonal
Isotype:	IgY
Conjugate:	Unconjugated
Molecular Weight:	18 kDa
Purity:	IgY preparation.
Product Form:	Liquid
Formulation:	Supplied as an aliquot of IgY preparation with 5mM Sodium Azide.
Storage:	Shipped at 4°C. Upon delivery aliquot and store at -20°C. Avoid freeze / thaw cycles.
Disclaimer:	This product is for research use only. It is not intended for diagnostic or therapeutic use.

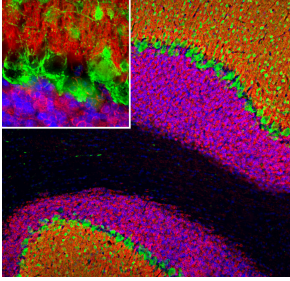
Images:



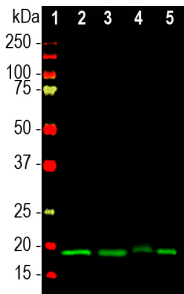
Confocal image of adult rat cerebellar cortex stained with Anti-Visinin Like Protein 1 Antibody (green), Anti-NF-M Antibody (A85323 | red) and DNA (blue). The Anti-Visinin Like Protein 1 Antibody reveals synapses in the molecular layer (ML) strongly. Synaptic regions are also seen in the granule cell layer (GC). The perikarya of Purkinje cells (PC) and dendrites and axons are revealed with the Anti-NF-M Antibody. Little staining of VLP-1 is seen in the white matter (WM).

Anti-Visinin Like Protein 1 Antibody (A85344)

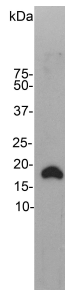
Images continued:



Immunofluorescent analysis of rat cerebellum section stained with Anti-Visinin Like Protein 1 Antibody (A85344), at a dilution of 1:2,000, in red, and co-stained with Anti-Parvalbumin Antibody (A85317), at a dilution of 1:1,000, in green. Following transcardial perfusion of the rat with 4% paraformaldehyde, the brain was post-fixed for 24 hours, cut to 45 μ m, and free-floating sections were stained with the above antibodies. The Anti-Visinin Like Protein 1 Antibody (A85344) reveals the protein expressed in the granule cell membranes and in the neuronal synapses of white matter and molecular layer of the cerebellum, while the Anti-Parvalbumin Antibody (A85317) labels Purkinje cells, basket, stellate, and Golgi cells.



Western blot analysis of different tissue lysates using Anti-Visinin Like Protein 1 Antibody (A85344), at a dilution of 1:10,000, in green. The lanes contain samples of: [1] Protein standards, in red, [2] rat brain, [3] mouse brain, [4] pig hippocampus, and [5] cow cerebellum. The band at approximately 20 kDa corresponds to Visinin Like Protein 1.



Western blot of rat brain homogenate stained with Anti-Visinin Like Protein 1 Antibody. Note the strong clean band running at 18 kDa.