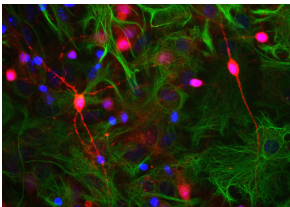


Anti-Visinin Like Protein 1 Antibody (A85347)

Specifications:

Name:	Anti-Visinin Like Protein 1 Antibody
Description:	Rabbit polyclonal antibody to Visinin Like Protein 1.
Applications:	WB, ICC/IF, IHC
Recommended Dilutions:	WB: 1:10,000, ICC/IF: 1:2,000, IHC: 1:2,000
Reactivity:	Human, Rat, Mouse
Immunogen:	Recombinant full-length human VLP1, expressed in and purified from E. coli.
Host:	Rabbit
Clonality:	Polyclonal
Isotype:	IgG
Conjugate:	Unconjugated
Purification:	Immunogen affinity purification.
Concentration:	1 mg/ml
Molecular Weight:	18 kDa
Product Form:	Liquid
Formulation:	Supplied in Phosphate Buffered Saline with 50% Glycerol and 5mM Sodium Azide.
Storage:	Shipped at 4°C. Upon delivery aliquot and store at -20°C. Avoid freeze / thaw cycles.
Disclaimer:	This product is for research use only. It is not intended for diagnostic or therapeutic use.

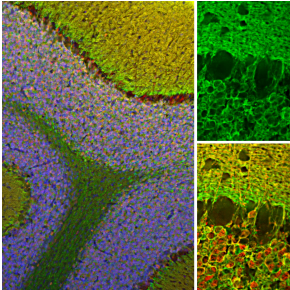
Images:



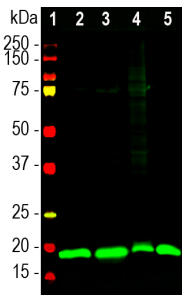
Neuron-glia cell culture stained with Anti-Visinin Like Protein 1 Antibody (red), Anti-GFAP Antibody (A85422 | green) and DNA (blue). The Anti-Visinin Like Protein 1 Antibody reveals strong staining throughout some small neurons in soma and all processes, accumulation is seen in some hotspots along neurites. Anti-GFAP Antibody appears only in astrocytes.

Anti-Visinin Like Protein 1 Antibody (A85347)

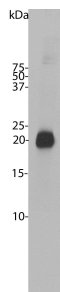
Images continued:



Immunofluorescent analysis of rat cerebellum section stained with Anti-Visinin Like Protein 1 Antibody (A85347), at a dilution of 1:2,000, in green, and co-stained with Anti-Calretinin Antibody (A85366), at a dilution of 1:2,000 in red. The nuclear DNA is visualised in blue using Hoechst staining. Following transcardial perfusion of the rat with 4% paraformaldehyde, the brain was post-fixed for 24 hours, cut to 45 μm , and free-floating sections were stained with the above antibodies. The Anti-Visinin Like Protein 1 Antibody (A85347) reveals protein expressed in granule cells membranes and their synapses in both the granular and molecular layer of the cerebellum. The Anti-Calretinin Antibody (A85366) stains the cytoplasm of neurons in the nuclear and molecular layers of cerebellum.



Western blot analysis of different tissue lysates using Anti-Visinin Like Protein 1 Antibody (A85347), at a dilution of 1:20,000, in green. The lanes contain samples of: [1] Protein standards, in red, [2] rat brain [3] mouse brain, [4] pig hippocampus, and [5] cow cerebellum. The band at approximately 20 kDa corresponds to Visinin Like Protein 1.



Western blot of bovine cerebellum homogenate stained with Anti-Visinin Like Protein 1 Antibody. Note the strong clean band running at 22 kDa.