

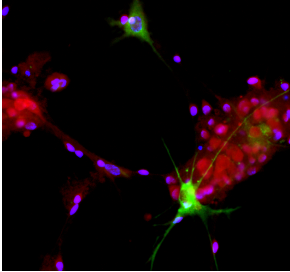
Anti-Aldolase C Antibody [1A1] (A85384)

Specifications:

Name:	Anti-Aldolase C Antibody [1A1]
Description:	Mouse monoclonal (1A1) antibody to Aldolase C.
Specificity:	The epitope for this antibody is located in the peptide KYEGSGEDGGA, amino acids 342-352 of the human Aldolase C. Interestingly, this antibody does not cross-react with mouse Aldolase C, which is somewhat different in sequence, RYEGSGDGGA, with a R>K change and missing an E residue, and since this antibody binds to aldolases from other species also lacking the E residue, and since the K>R change is unique to mouse, we can conclude that the K342 is essential for the binding of this antibody.
Applications:	WB, ICC/IF, IHC
Recommended Dilutions:	WB: 1:1,000, ICC/IF: 1:500-1:1,000, IHC: 1:500-1:1,000
Reactivity:	Human, Bovine, Rat, Canine
Cross Reactivity:	This antibody does not cross-react with Mouse.
Immunogen:	Recombinant fragment corresponding to the C-terminal, amino acids 342-364, of human Aldolase C.
Sequence:	KYEGSGEDGGAAAQSLYIANHAY
Host:	Mouse
Clonality:	Monoclonal
Clone ID:	1A1
Isotype:	IgG1
Conjugate:	Unconjugated
Purification:	Immunogen affinity purification.
Concentration:	1 mg/ml
Molecular Weight:	40 kDa
Product Form:	Liquid
Formulation:	Supplied in Phosphate Buffered Saline with 50% Glycerol and 5mM Sodium Azide.
Storage:	Shipped at 4°C. Upon delivery aliquot and store at -20°C. Avoid freeze / thaw cycles.
Disclaimer:	This product is for research use only. It is not intended for diagnostic or therapeutic use.

Anti-Aldolase C Antibody [1A1] (A85384)

Images:



View of mixed neuron/glia cultures stained with Anti-Aldolase C Antibody (green) and Anti-NeuN/FOX3 Antibody (A85403 | red). Anti-Aldolase C Antibody reveals strong cytoplasmic staining in astrocytes, while Anti-Fox3/NeuN Antibody shows nuclear and distal cytoplasmic staining in neuron cells and is complete absence of astrocytes. Blue is a DNA stain.



Blots of crude rat brain lysates blotted with Anti-Aldolase C Antibody. The Anti-Aldolase C Antibody binds strongly and cleanly to a band at about 40 kDa. Other studies show that this antibody is completely specific for Aldolase C, and does not react with recombinant human Aldolase A or B.