

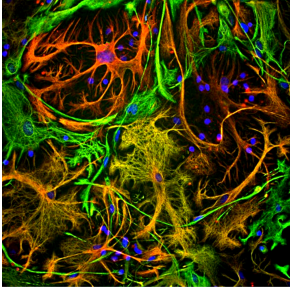
## Anti-Vimentin Antibody [2A52] (A85423)

### Specifications:

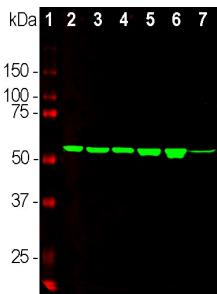
Name:	Anti-Vimentin Antibody [2A52]
Description:	Mouse monoclonal (2A52) antibody to Vimentin.
Specificity:	The epitope for this antibody is located in the C-terminal "tail" region of Vimentin, included in the peptide SRISLPLPNFSSLNREL.
Applications:	WB, ICC/IF, IHC
Recommended Dilutions:	WB: 1:10,000, ICC/IF: 1:5,000, IHC: 1:5,000
Reactivity:	Human, Rat
Cross Reactivity:	This antibody does not cross-react with Mouse.
Immunogen:	Recombinant full-length human Vimentin, expressed in and purified from E. coli.
Host:	Mouse
Clonality:	Monoclonal
Clone ID:	2A52
Isotype:	IgG1
Conjugate:	Unconjugated
Purification:	Immunogen affinity purification.
Concentration:	1 mg/ml
Molecular Weight:	50 kDa
Product Form:	Liquid
Formulation:	Supplied in Phosphate Buffered Saline with 50% Glycerol and 5mM Sodium Azide.
Storage:	Shipped at 4°C. Upon delivery aliquot and store at -20°C. Avoid freeze / thaw cycles.
Disclaimer:	This product is for research use only. It is not intended for diagnostic or therapeutic use.

## Anti-Vimentin Antibody [2A52] (A85423)

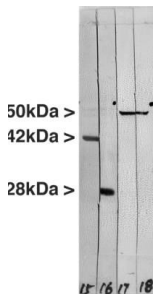
### Images:



Immunofluorescent analysis of cortical neuron-glia cell culture from E20 rat stained with Anti-Vimentin Antibody (1:5,000 | green) and Anti-GFAP Antibody (A85419 | 1:5,000 | red). The blue is DAPI staining of nuclear DNA. Fibroblastic cells contain only vimentin, so they are green. Developing astrocytic cells contain variable amounts of GFAP and vimentin, and so may appear red, green or yellow.



Western blot analysis of cell and whole brain tissue lysates using Anti-Vimentin Antibody (1:5,000 | green): [1] protein standard (red), [2] HEK293, [3] HeLa, [4] COS-1, [5] C6 cells, and [6] rat brain. The band at about 50 kDa mark corresponds to vimentin.



Western blot of crude extract of the human carcinoma HeLa cell line. Lane 18 was probed with Anti-Vimentin Antibody - showing a single sharp band at the expected molecular weight of 50 kDa. Lane 18 was probed with Anti-Vimentin Antibody (A85424). Lane 15 was probed with Anti-Actin Antibody (A85388) - giving an SDS-PAGE molecular weight of 42 kDa. Lane 16 was probed with Anti-14-3-3 eta Antibody (A85361) - which has an SDS-PAGE molecular weight of 28 kDa.