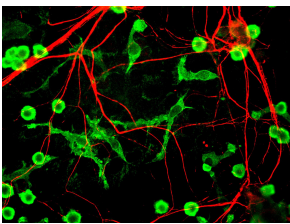


Anti-alpha Internexin Antibody (A85446)

Specifications:

Name:	Anti-alpha Internexin Antibody
Description:	Chicken polyclonal antibody to alpha Internexin.
Applications:	WB, ICC/IF, IHC
Recommended Dilutions:	WB: 1:10,000, ICC/IF: 1:1,000, IHC: 1:1,000
Reactivity:	Human, Rat, Mouse, Bovine, Porcine, Horse
Immunogen:	Recombinant full-length rat alpha Internexin, expressed in and purified from E. coli.
Host:	Chicken
Clonality:	Polyclonal
Isotype:	IgY
Conjugate:	Unconjugated
Molecular Weight:	64-66 kDa
Purity:	IgY preparation.
Product Form:	Liquid
Formulation:	Supplied as an aliquot of IgY preparation with 5mM Sodium Azide.
Disclaimer:	This product is for research use only. It is not intended for diagnostic or therapeutic use.

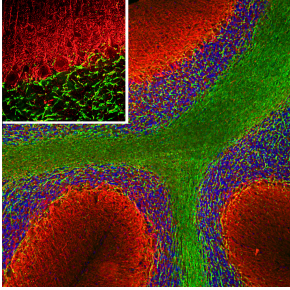
Images:



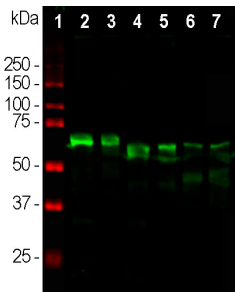
Mixed neuron glia cultures stained with Anti-Alpha-Internexin Antibody (red) and Anti-Coronin 1a Antibody (A85431 | green) - an excellent marker of microglia and lymphocytes. The Anti-Alpha-Internexin Antibody is an excellent marker of neuronal processes in these cultures.

Anti-alpha Internexin Antibody (A85446)

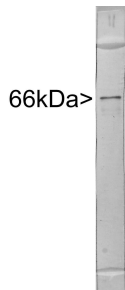
Images continued:



Immunofluorescent analysis of a rat cerebellum section stained with Anti-alpha Internexin Antibody (A85446), at a dilution of 1:5,000, in red, and co-stained with Anti-MBP Antibody (A85322), at a dilution of 1:5,000, in green. The nuclear DNA is visualised in blue using Hoechst staining. Following transcardial perfusion of the rat with 4% paraformaldehyde, the brain was post-fixed for 24 hours, cut to 45 μ m, and free-floating sections were stained with the above antibodies. The Anti-alpha Internexin Antibody (A85446) selectively stains axons and dendrites of neuronal cells, in particular Purkinje cells, parallel fibers and the axons of granule cells, while the Anti-MBP Antibody (A85322) stains myelin sheaths around axons.



Western blot analysis of different tissue lysates using Anti-alpha Internexin Antibody (A85446), at a dilution of 1:10,000, in green. The lanes contain samples of: [1] Protein standards, in red, [2] rat brain, [3] rat spinal cord, [4] mouse brain, [5] mouse spinal cord, [6] cow spinal cord and [7] pig spinal cord. The Anti-alpha Internexin Antibody (A85446) reveals the alpha Internexin protein with apparent molecular weight of 64-66 kDa, with some variability among different species.



Western blot of extract of rat brain stem crude extract stained with Anti-Alpha-Internexin Antibody - showing a single strong clean band at \sim 66kDa.